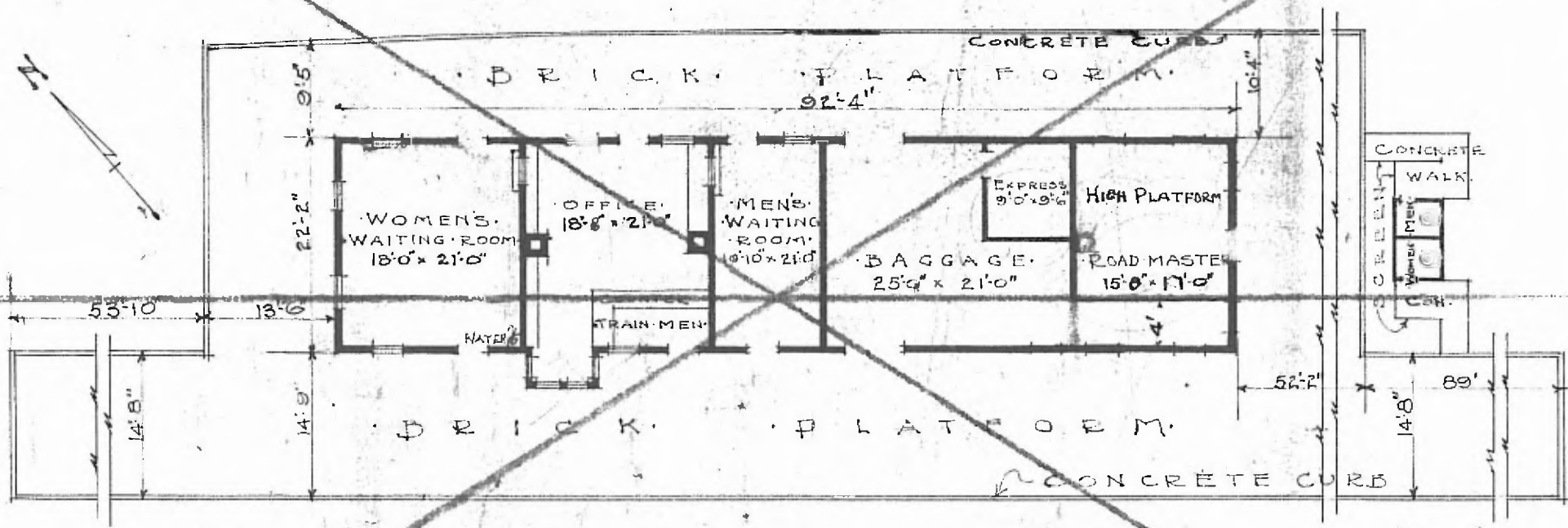


- ERECTED TYPE: FOUNDATION: WALLS: ROOF: HEATING:
- FRAME: PILE HEADS: 2"x6" GABLE SHINGLES 1/4 STOYES
- FLOOR FINISH: INSIDE: 7/8"x3/4" M.&B. WAINSCOT TO SILL. OUTSIDE: DROP SIDING. CEILING HEIGHT: 12'-0"
- LIGHTING: ELECTRIC
- SANITARY FACILITIES: OUTSIDE TOILETS.

SOUTHERN D.V.
STR. NO. C.293



FLOOR PLAN.
SCALE 1/16" = 1'-0"

SEE NEW DRAWING

PASSENGER STATION
WILLOW SPRINGS MO.

DEC. 9, 1915.