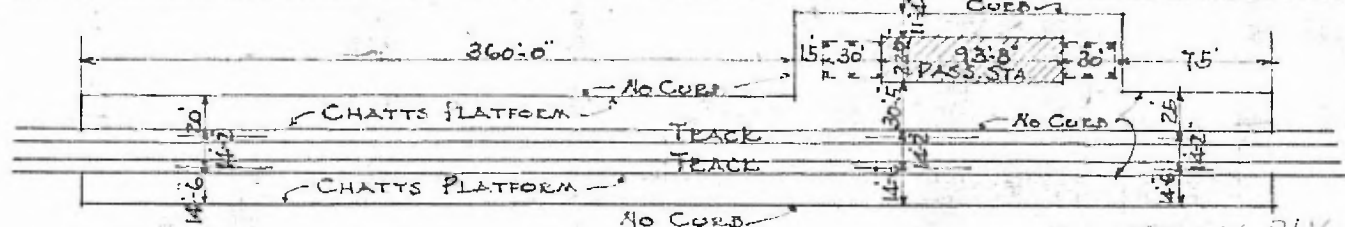


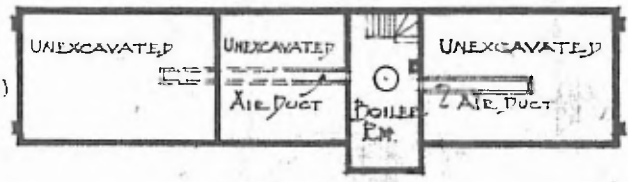
ERECTED TYPE FOUNDATIONS WALLS ROOF { TYPE FITCH HEATING FLOOR FINISH { INSIDE OUTSIDE CEILING HEIGHT LIGHTING SANITARY FACILITIES.

1910 FRAME. CONCRETE. 2"x6" & 10" CON. HIP, TILE 1/3 FURNACE (HOT AIR) GRANITOID PLASTER. STUCCO. 13' ELECTRIC. INSIDE

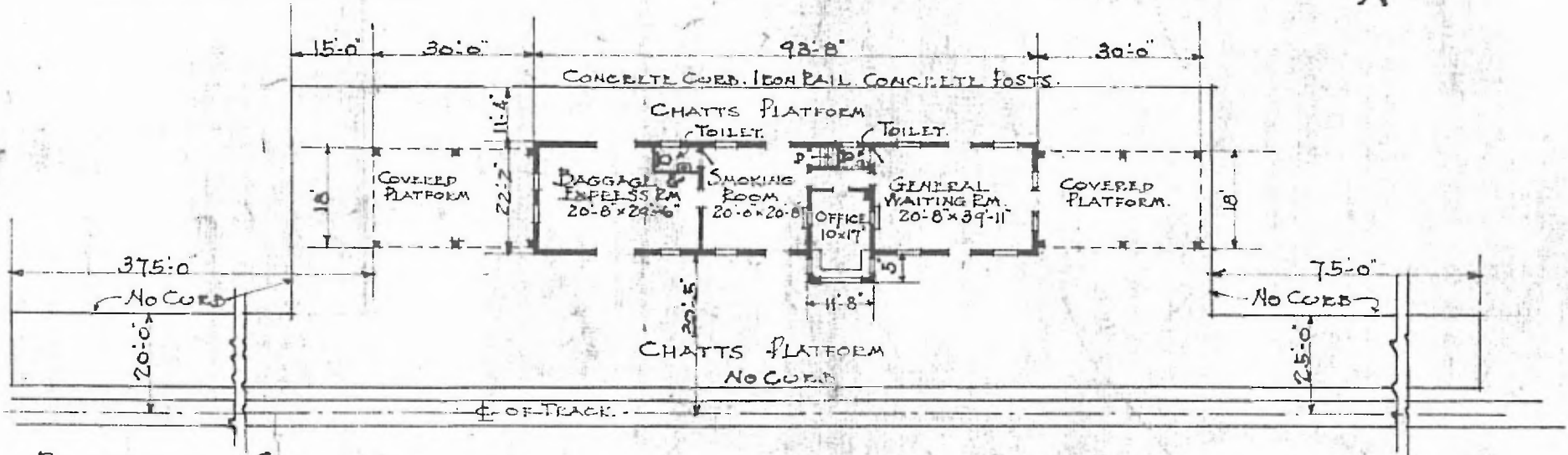


PLOT PLAN. SCALE: 1"=100'

EASTERN DIV. ROLLER SUB STA. No. 10



BASEMENT PLAN.



PASSENGER STATION WEBSTER GROVES, MO.

FLOOR PLAN. SCALE: 1"=30'-0"

FEB. 1, 1917.