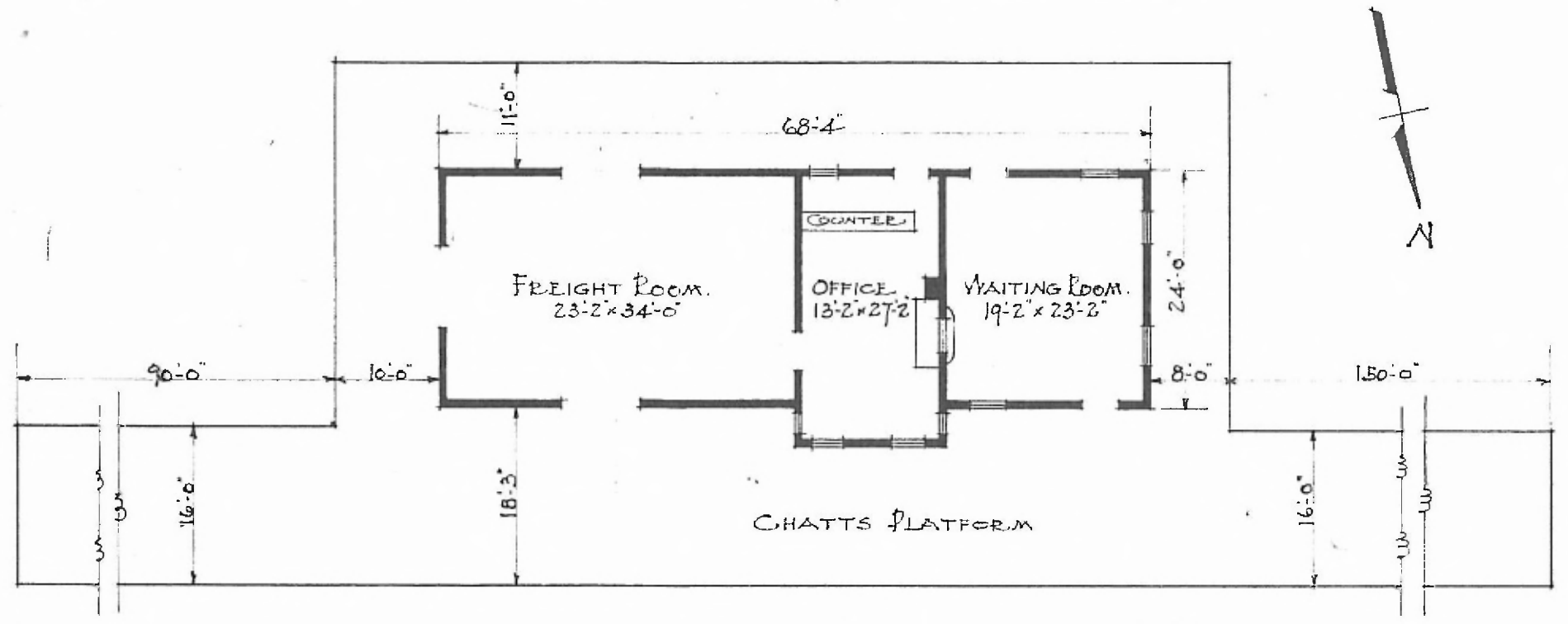


ERECTED 1898  
 TYPE FRAME  
 FOUNDATION PILE HEADS  
 WALLS 2"x4"  
 ROOF { TYPE GABLE SHINGLES  
 PITCH 1/4  
 HEATING STOVES.

FLOOR 7/8" x 3 1/4"  
 FINISH { INSIDE 7/8" x 5 1/4" BD. CEILING.  
 OUTSIDE BOX & BATTENS  
 CEILING HEIGHT 12'-6"  
 LIGHTING LAMPS.  
 SANITARY FACILITIES. OUTSIDE TOILETS.

EASTERN DIV.  
 SPRINGFIELD SUB  
 STA. NO. 274



FLOOR PLAN.  
 SCALE: 1/16" = 1'-0"