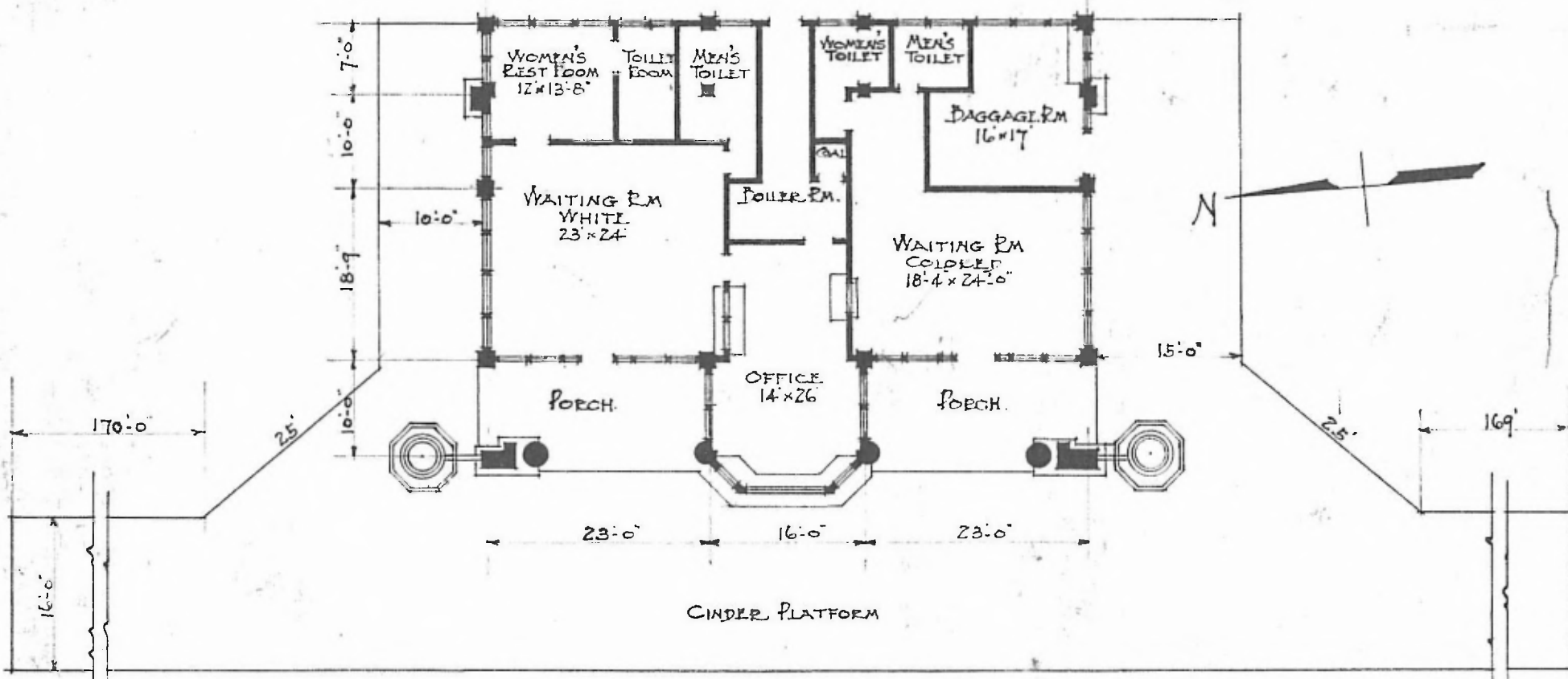


ERECTED 1913.
 TYPE CONCRETE
 FOUNDATION CONCRETE.
 WALLS 12"
 ROOF { TYPE FLAT. TAR & GRAVEL
 PITCH
 HEATING HOT WATER 62:0"

FLOOR CONCRETE.
 FINISH { INSIDE. PLASTER
 OUTSIDE. CONCRETE STUCCO
 CEILING HEIGHT 13'-8"
 LIGHTING ELECTRIC
 SANITARY FACILITIES INSIDE

EASTERN DIV.
 ROLLING SUB
 STA. NO 18



PASSENGER STATION
 VALLEY PARK, MO.

FLOOR PLAN.
 SCALE - 1/16" = 1'-0"