

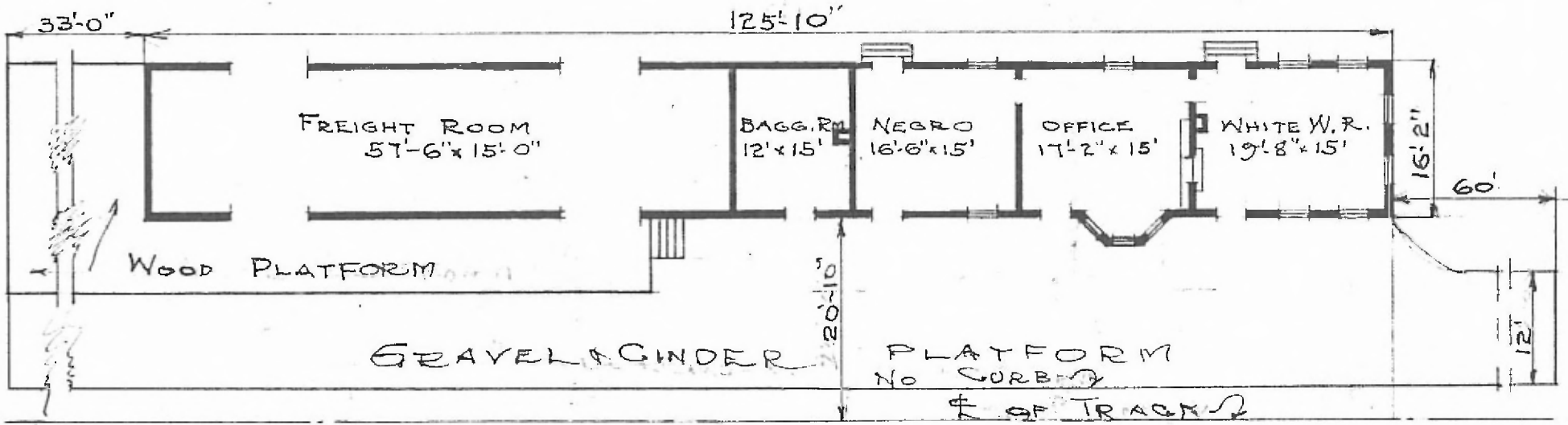
24

ERECTED 1906
 TYPE FRAME
 FOUNDATION PILE HEADS
 WALLS 2x6
 ROOF { TYPE GABLE-SHINGLES
 PITCH 3
 HEATING STOVES

FLOOR
 FINISH { INSIDE
 OUTSIDE
 CEILING HEIGHT
 LIGHTING
 SANITARY FACILITIES

7" 1/8 x 3 1/4 Y.P.
 2" x 3 1/4 M. & R.
 BOXING & BATTENS
 WAIT. RM. = 11'-10"; FR.T. RM. = 9'-4"
 OIL
 OUTSIDE TOILETS

*St. 78 1/2 worth
 Br. fl. seats
 Rio Grande
 haulway*



FLOOR PLAN
 SCALE: 1/16" = 1'-0"

COMBINATION STATION
 TOLAR, TEX.

MARCH 20, 1920