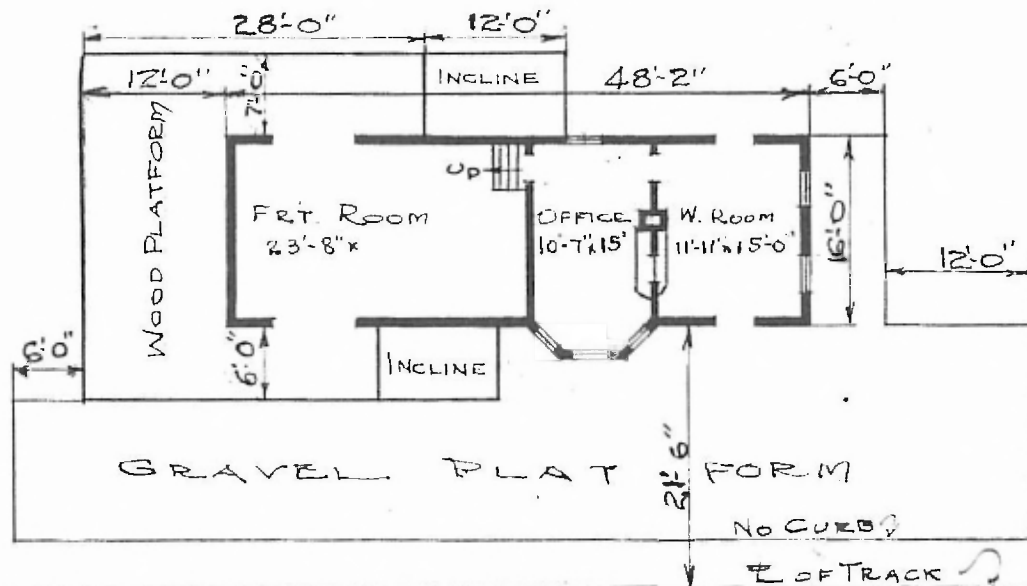


14

ERECTED 1902
 TYPE FRAME
 FOUNDATION PILE HEADS
 WALLS 2x4
 ROOF { TYPE GABLE-SHINGLES
 { PITCH $\frac{1}{3}$
 HEATING STOVES

FLOOR $\frac{7}{8} \times \frac{1}{4}$
 $\frac{7}{8} \times \frac{1}{4}$
 FINISH { INSIDE $\frac{7}{8} \times \frac{1}{4}$ M. & B.
 { OUTSIDE BOXING & BATTENS
 CEILING HEIGHT WAIT. RM. = 12' ; FR.T. RM. 9' 0"
 LIGHTING OIL
 SANITARY FACILITIES OUTSIDE TOILETS

St 833
 Feb 27/24
 Rio Grande
 Railway



FLOOR PLAN
 SCALE: $\frac{1}{16}'' = 1'-0''$



COMBINATION STATION
 PROCTOR, TEX.

FEB. 27, 1920