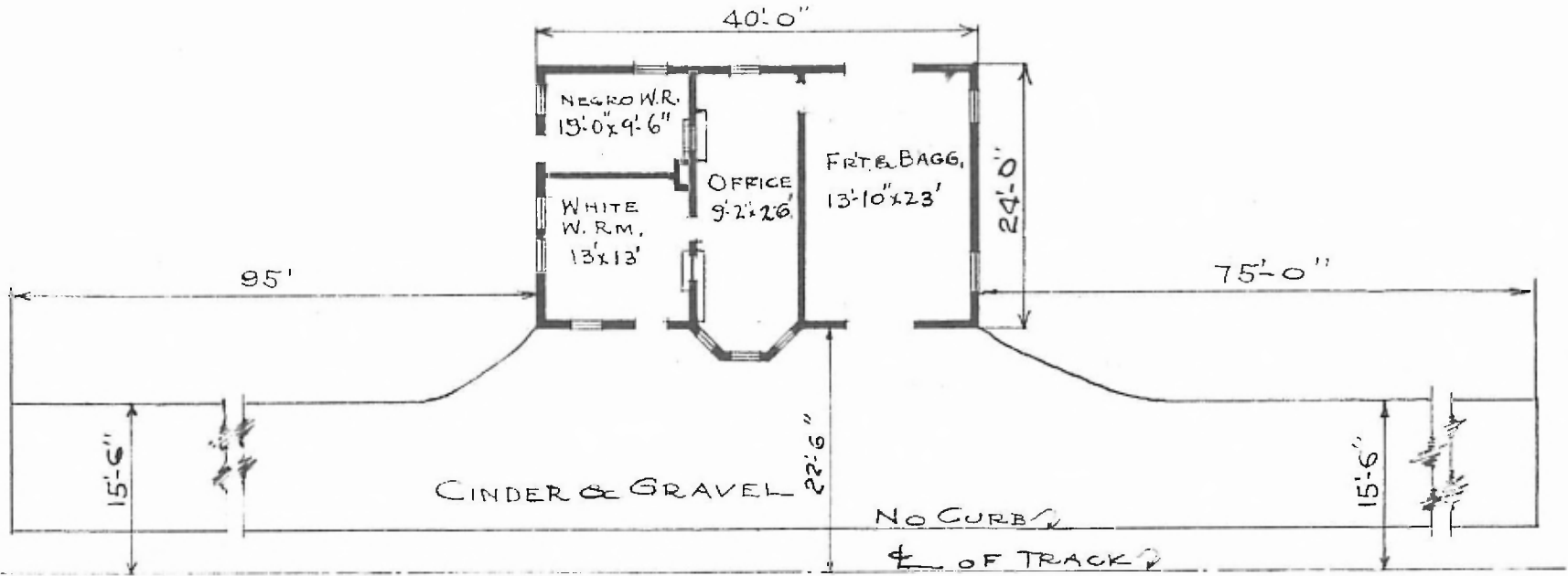


2

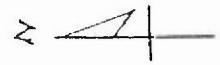
ERECTED 1912  
 TYPE STD #2  
 FOUNDATION CONCRETE  
 WALLS 2x6  
 ROOF TYPE HIP-SHINGLES  
 PITCH  $\frac{1}{3}$   
 HEATING STOVES

FLOOR 2" MAPLE  
 FINISH { INSIDE  $\frac{3}{4}$ " x  $\frac{3}{4}$ " V-JOINT CLG VERTICAL  
 OUTSIDE DROP SIDING  
 CEILING HEIGHT 11'-3 1/2"  
 LIGHTING OIL  
 SANITARY FACILITIES OUTSIDE TOILETS

32.573  
 Sub Arthur  
 Div Central



FLOOR PLAN  
 SCALE:  $\frac{1}{16}$ " = 1'-0"



COMBINATION STATION  
 POWDERLY, TEX.

FEB. 12, 1920