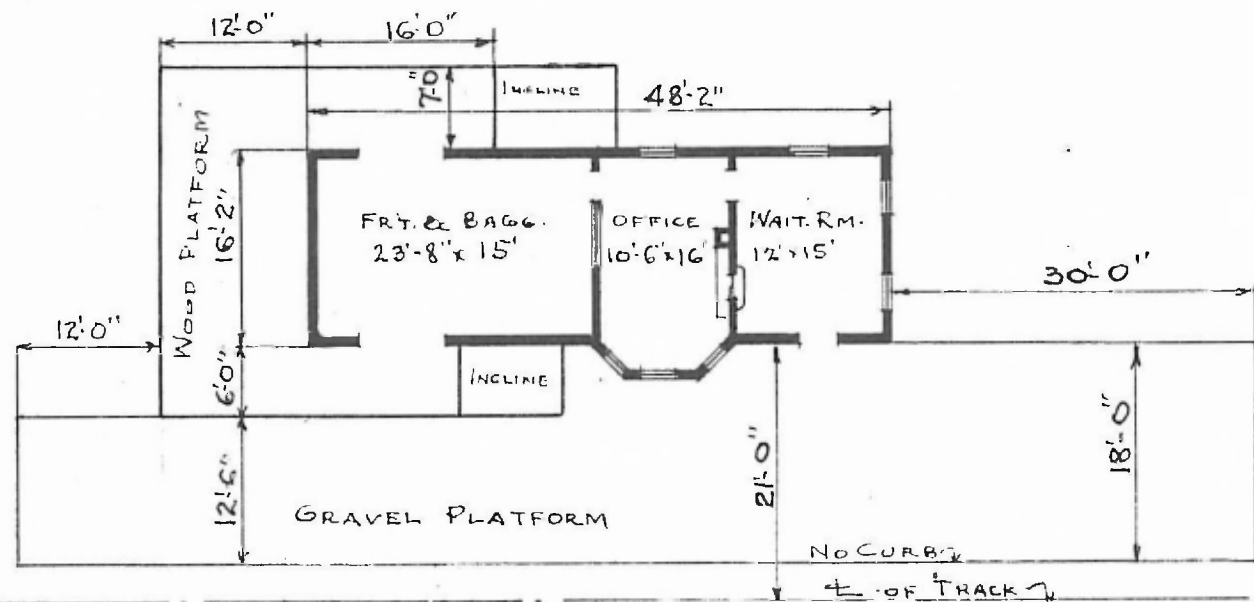


ERECTED 1902  
 TYPE FRAME  
 FOUNDATION PILE HEADS  
 WALLS 2x4  
 ROOF { TYPE GABLE SHINGLES  
 PITCH 3  
 HEATING STOVES

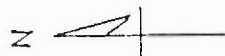
FLOOR  $7\frac{1}{8} \times 32$ " Y.P.  
 FINISH { INSIDE  $3\frac{1}{8} \times 3\frac{1}{4}$ " M. & B.  
 OUTSIDE BOX & BATT.  
 CEILING HEIGHT WAIT. RM. = 12'-0"; FR'T. RM. = 9'-0"  
 LIGHTING OIL  
 SANITARY FACILITIES OUTSIDE TOILETS

St 839  
 Ft Worth  
 Rio Grande  
 Railway

13



FLOOR PLAN  
 SCALE:  $\frac{1}{16}'' = 1'-0''$



COMBINATION STATION  
 HASSE, TEX.