

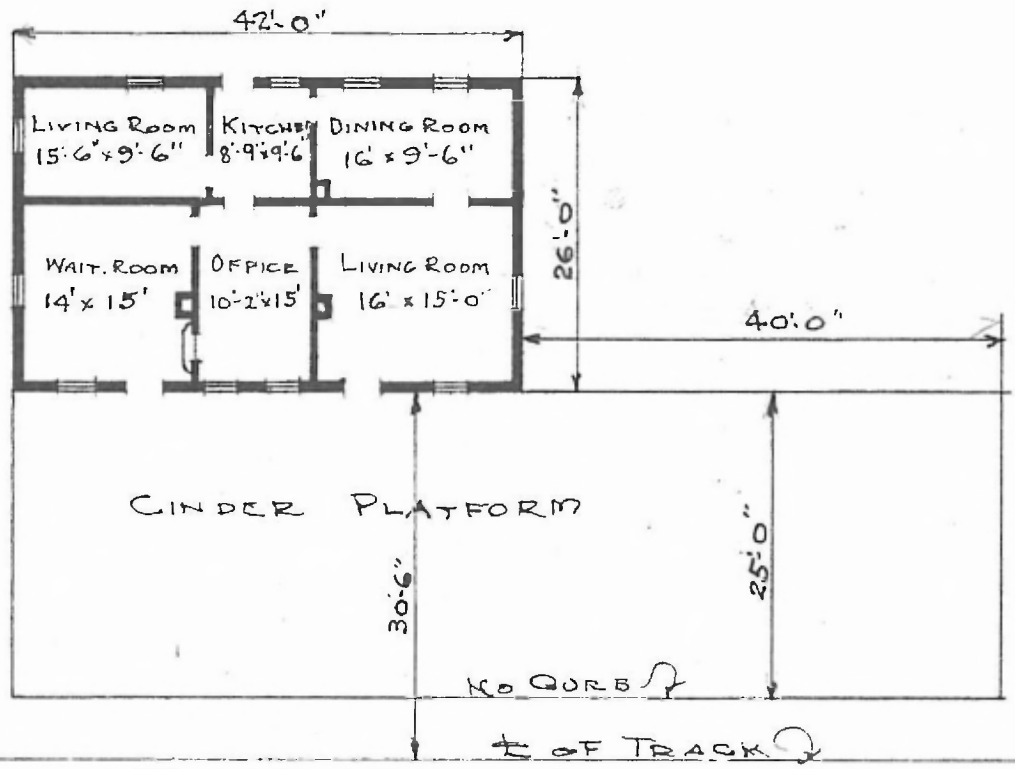
ERECTED TYPE
 FOUNDATION WALLS
 ROOF { TYPE
 PITCH
 HEATING

FRAME BLOCKS
 2x4
 GABLE SHINGLE
 $\frac{1}{3}$ & $\frac{1}{4}$
 STOVES

FLOOR FINISH { INSIDE
 OUTSIDE
 CEILING HEIGHT
 LIGHTING
 SANITARY FACILITIES

$\frac{7}{8}$ " x $\frac{11}{16}$ "
 $\frac{3}{4}$ " x $\frac{3}{4}$ " M. & B.
 Box. & BATT.
 10'-10"
 OIL
 OUTSIDE TOILETS

St. 819 with
 Ft. Scott
 Rio Grande
 Railway (25)



FLOOR PLAN
 SCALE: $\frac{1}{16}$ " = 1'-0"

COMBINATION PASSENGER & DWELLING STA.
 HARBIN, TEX.

MARCH 19, 1920