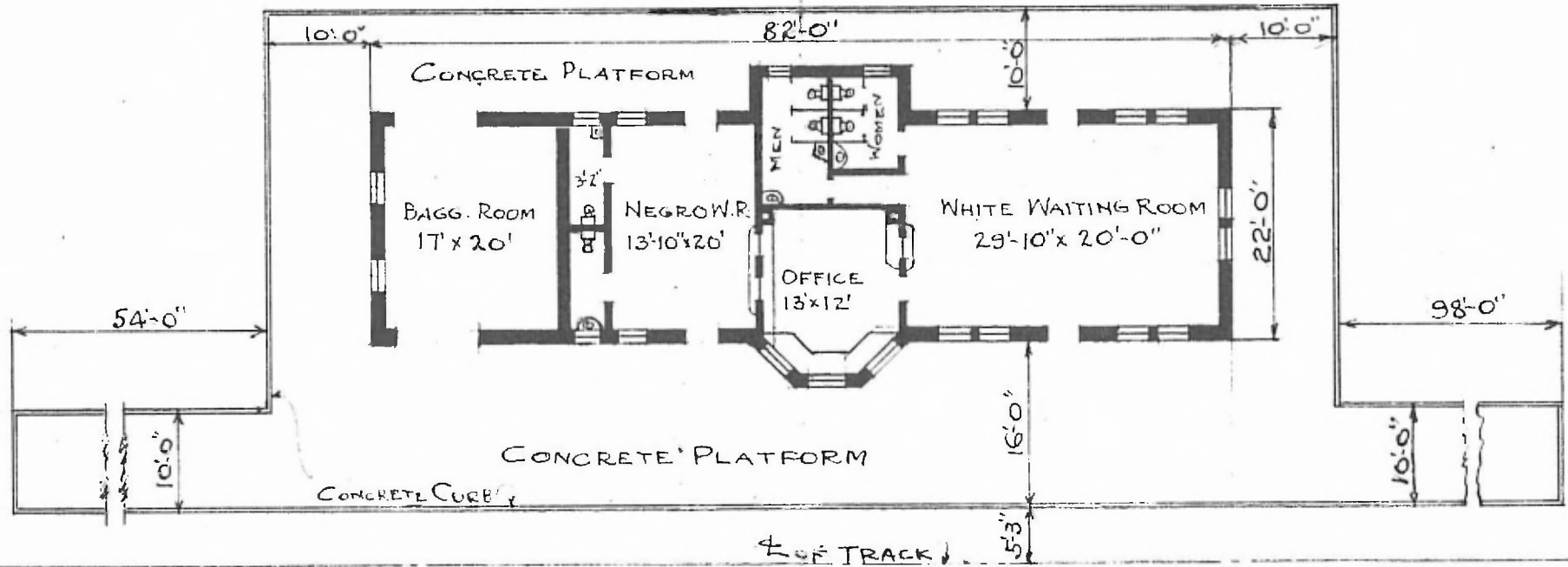


ERECTED 1904
 TYPE BRICK
 FOUNDATION CONCRETE
 WALLS 13" BRICK
 ROOF { TYPE HIP-TILE
 { PITCH $\frac{1}{3}$
 HEATING STOVES

FLOOR 7" $\frac{1}{8}$ " x 34" Y.P.
 FINISH { INSIDE PLASTER
 { OUTSIDE BRICK
 CEILING HEIGHT 13'-0"
 LIGHTING ELECTRIC
 SANITARY FACILITIES INSIDE TOILETS

St. 824
 L. Worth
 Rio Grande Railway



COMBINATION STATION
 DUBLIN, TEX.

FEB. 28, 1920