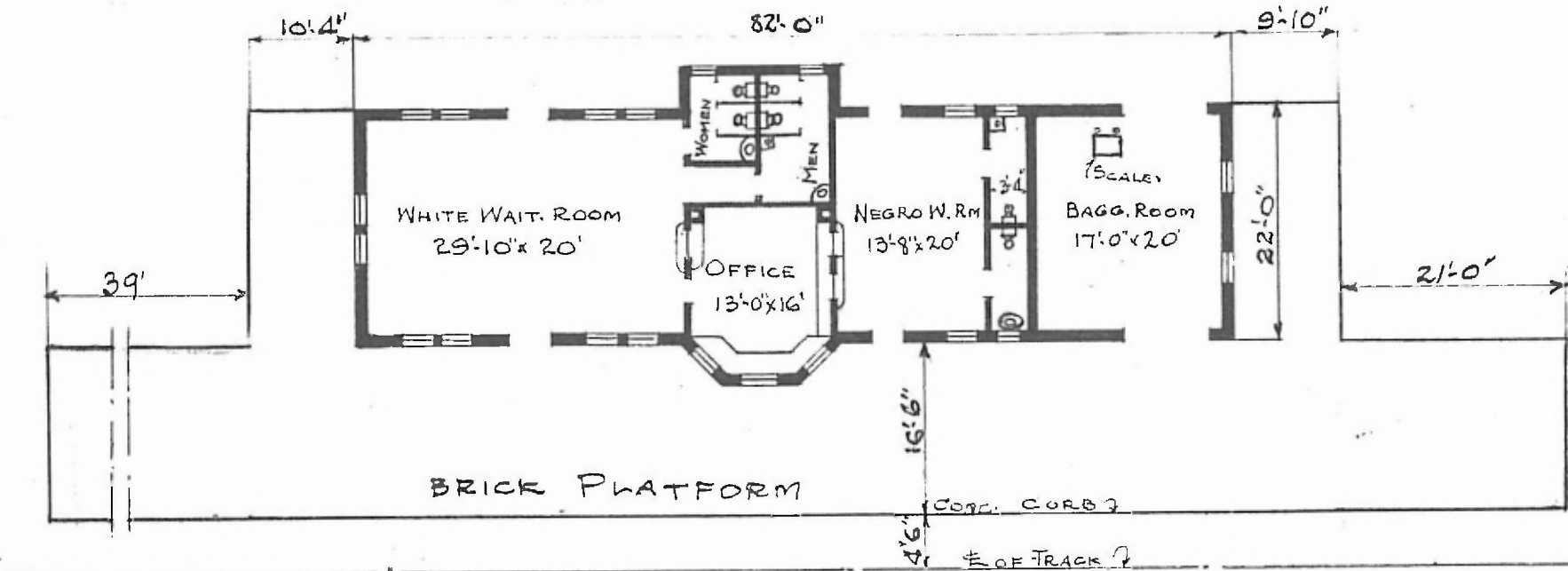


12

ERECTED 1906
 TYPE BRICK
 FOUNDATION CONCRETE
 WALLS 13"
 ROOF { TYPE HIP-TILE
 PITCH $\frac{1}{3}$
 HEATING STOVES

FLOOR $7\frac{1}{8} \times 3\frac{1}{4}$ "
 FINISH { INSIDE PLASTER
 OUTSIDE PRESSED BRICK
 CEILING HEIGHT 13'-0"
 LIGHTING ELECTRIC
 SANITARY FACILITIES INSIDE TOILETS

St 846
 Fort Worth &
 Rio Grande Ra



FLOOR PLAN
 SCALE: $\frac{1}{16}'' = 1'-0''$

PASSENGER STATION
 COMANCHE, TEX.

FEB. 26, 1920