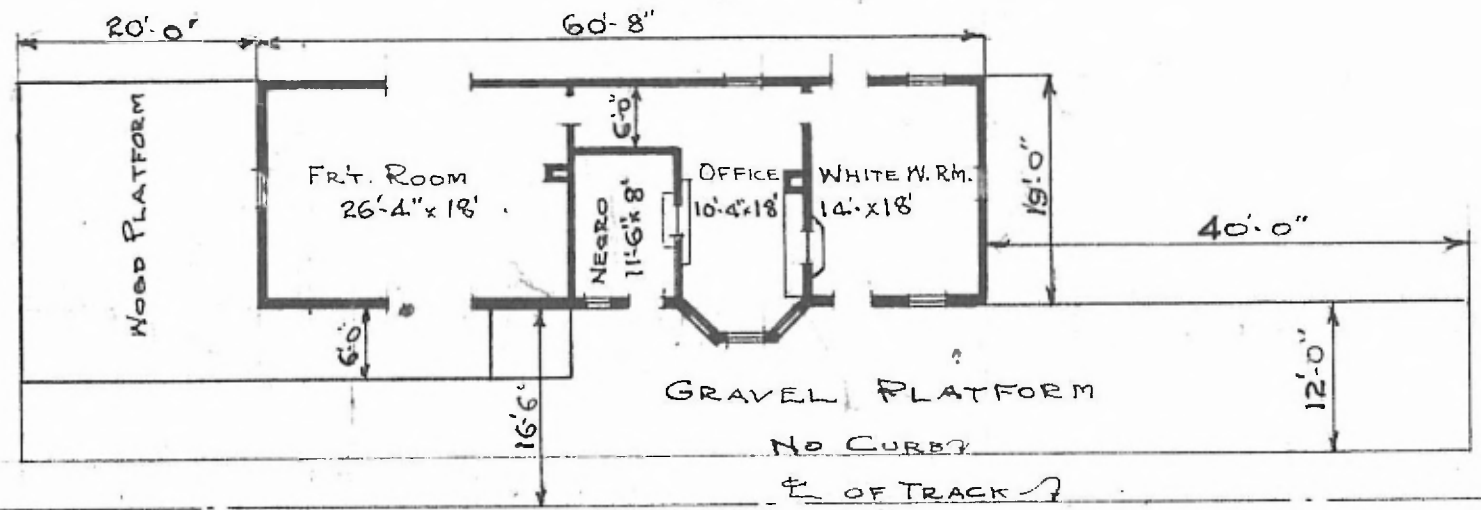


22

ERECTED 1904
 TYPE FRAME
 FOUNDATION PILE HEADS
 WALLS 2x4
 ROOF { TYPE GABLE-SHINGLE
 PITCH 3
 HEATING STOVES

FLOOR 7
 8x32
 FINISH { INSIDE 3/4x32 M. & B.
 OUTSIDE
 CEILING HEIGHT BOX. & BATT.
 LIGHTING OIL
 SANITARY FACILITIES OUTSIDE TOILETS
 WAIT. RM. = 10'0"; FR'T. RM. = 7'10" OPEN

St. 793
 Ft. Worth
 Rio Grande
 Railway



FLOOR PLAN
 SCALE: 1/16" = 1'-0"

COMBINATION STATION
 BLUFFDALE, TEX.

MARCH 16, 1920