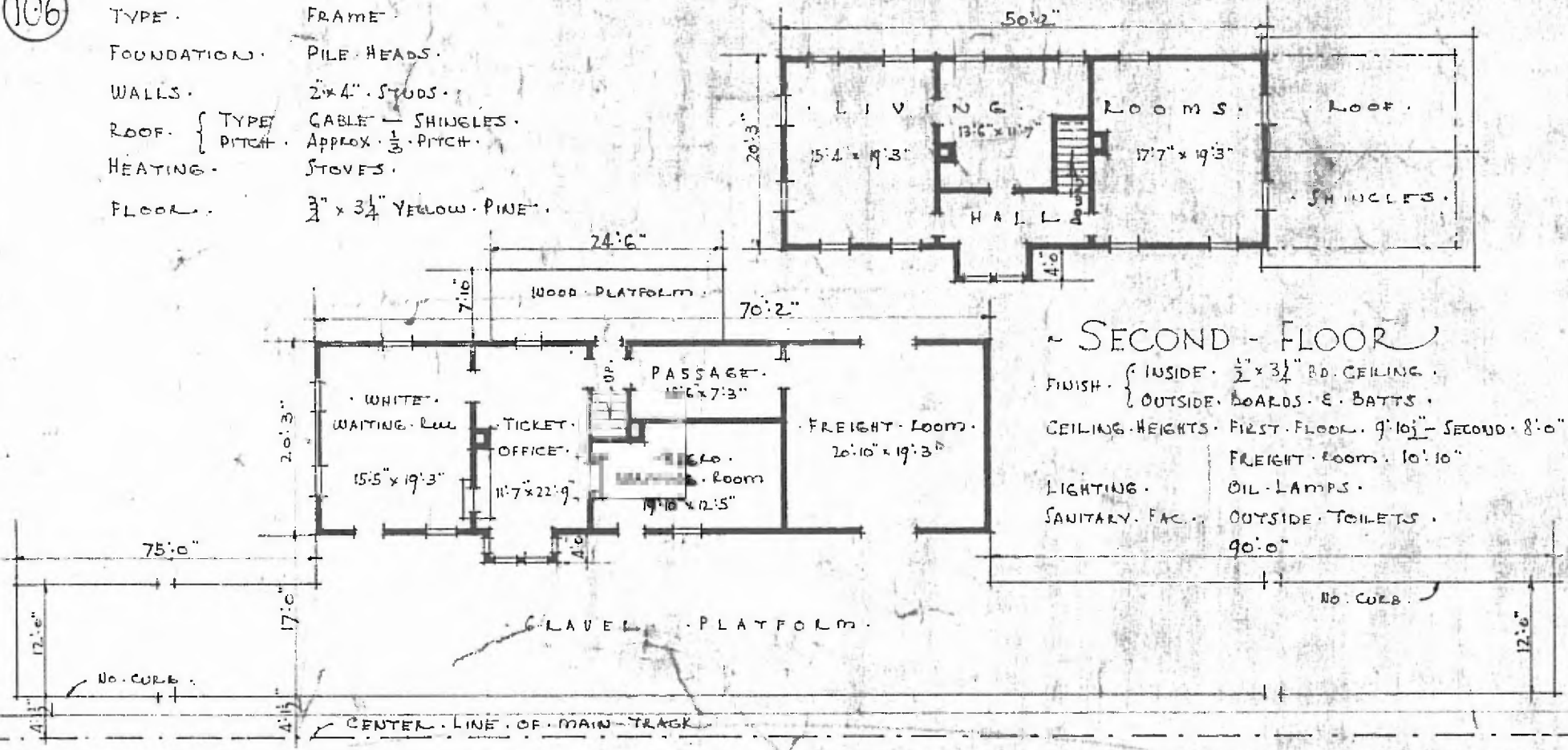


106

ERECTED - 1897. - EXTENDED - 1908.
 TYPE - FRAME
 FOUNDATION - PILE HEADS.
 WALLS - 2" x 4" STUDS.
 ROOF - { TYPE - SHINGLES.
 PITCH - APPROX. 1/3 PITCH.
 HEATING - STOVES.
 FLOOR - 3" x 3 1/2" YELLOW PINE.



~ SECOND FLOOR ~

FINISH - { INSIDE - 1/2" x 3 1/2" BD. CEILING.
 OUTSIDE - BOARDS & BATTIS.
 CEILING HEIGHTS - FIRST FLOOR - 9'10 1/2" - SECOND - 8'0"
 FREIGHT ROOM - 10'10"
 LIGHTING - OIL LAMPS
 SANITARY FAC. - OUTSIDE TOILETS
 90'0"

~ FLOOR PLAN ~
 SCALE - 1/16" = 1'-0"

DIV. P & G N CENTRAL DIV.
 JOB # 51411# ARTHUR
 STA. NO 569

- COMBINATION - STATION - AT
 - ARTHUR - CITY, TEXAS -



JULY 8. 1915.