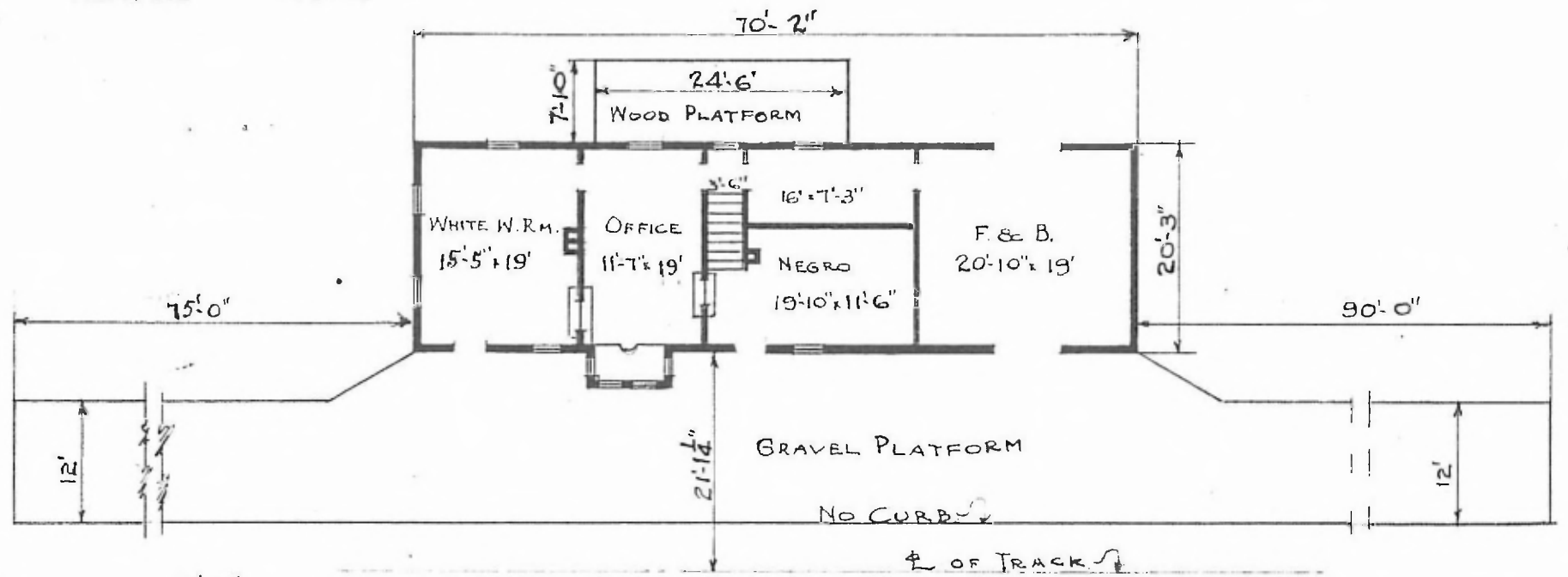


St. # 564
 Sub Arthur
 Div. Central

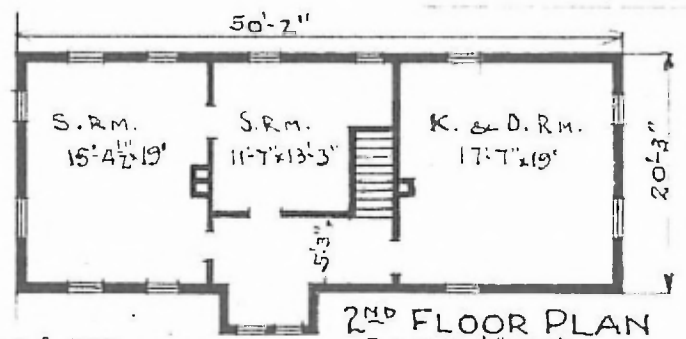
1

ERECTED 1908
 TYPE FRAME
 FOUNDATION PILE HEADS
 WALLS 2x4
 ROOF { TYPE GABLE SHINGLES
 PITCH 1/3
 HEATING STOVES

FLOOR 2x32 Y.P.
 FINISH { INSIDE 1/2x3/4 Bd. CLG. WAINSCOT 4'3"
 OUTSIDE B.&B. - 1 1/2" 06 DROP SIDING
 CEILING HEIGHT WAIT. RM. 9'10 1/2"; 2ND STORY - 8'0"
 LIGHTING OIL LAMPS
 SANITARY FACILITIES OUTSIDE TOILETS



1ST FLOOR PLAN
 Scale: 1/16" = 1'-0"



2ND FLOOR PLAN
 Scale: 1/16" = 1'-0"



COMBINATION STATION
 ARTHUR CITY, TEX.

JULY 8, 1913