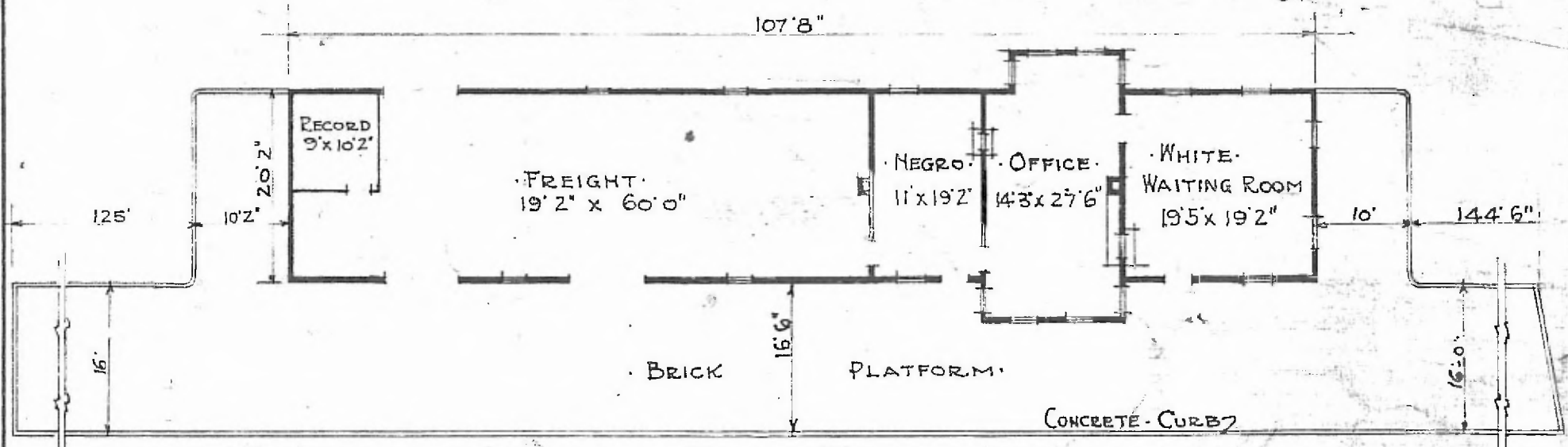


2

ERECTED: 1900 · EXT. 1913 ·  
 TYPE: FRAME ·  
 FOUNDATION: PILE HEADS ·  
 WALLS: 2" x 6" ·  
 ROOF { TYPE: GABLE · SHINGLES ·  
 { PITCH: 1/3 ·  
 HEATING: STOVES ·

FLOOR 3 1/4" Y. PINE ·  
 FINISH { INSIDE: 3" x 3 1/4" JO. CEILING ·  
 { OUTSIDE: BOARD & BATT ·  
 CEILING HEIGHT: 11' 7" ·  
 LIGHTING: NAT. GAS ·  
 SANITARY FACILITIES: OUTSIDE TOILET ·

SW - DIV. RED RIVER  
 SUB. DIV. CREEK  
 STA. 176 E-447



FLOOR PLAN ·  
 SCALE · 1/16" = 1' 0"

COMBINATION STATION AT  
 MOUNDS · OKLA

Oct. 2 - 1915