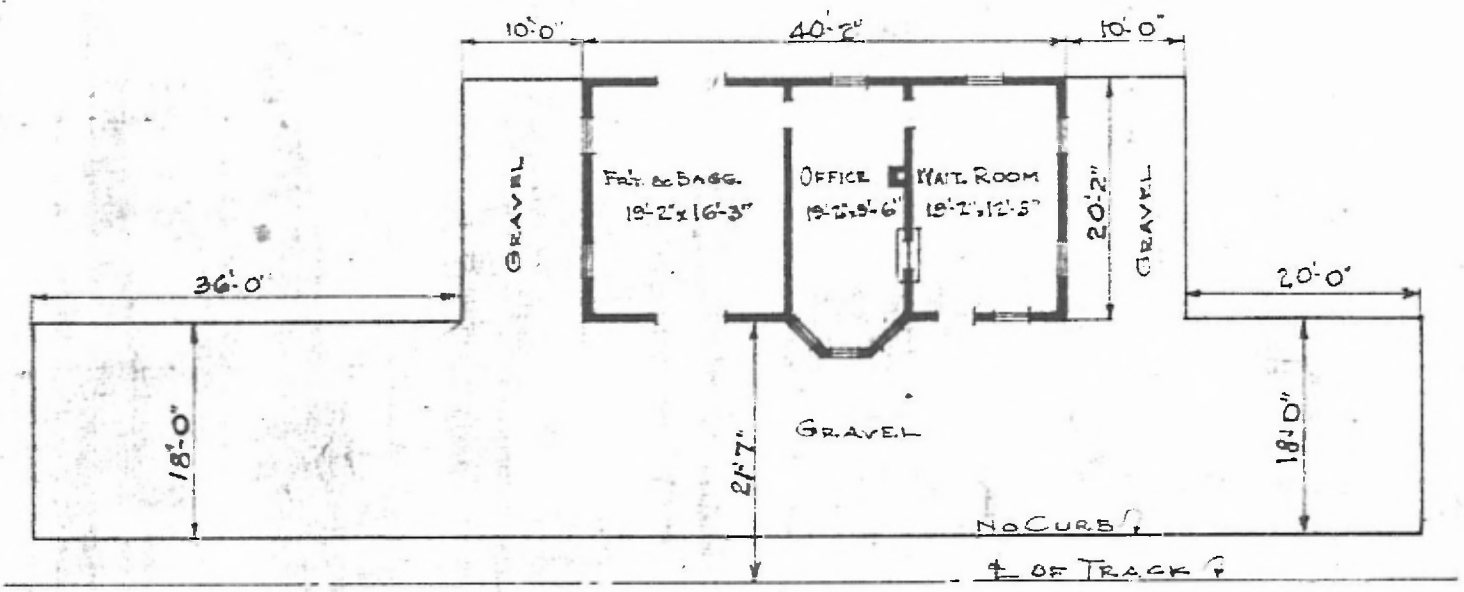


80

ERECTED 1915
 TYPE FRAME
 FOUNDATION BLOCKS
 WALLS 2x6
 ROOF { TYPE HIP-SHINGLES
 PITCH 10" RISE
 HEATING STOVES

FLOOR
 FINISH { INSIDE
 OUTSIDE
 CEILING HEIGHT 11'-2"
 LIGHTING OIL
 SANITARY FACILITIES OUTSIDE TOILETS

RIVER PIV.
 HOXIE SUB
 ST 17-120 T 9165
 $7\frac{1}{8} \times \frac{1}{32}$
 $7\frac{1}{8} \times \frac{1}{32}$ M. & V. JOINT
 DROP SIDING
 11'-2"
 OIL
 OUTSIDE TOILETS



FLOOR PLAN
 SCALE: $\frac{1}{16} = 1'-0"$

COMBINATION STATION
 SWINTON, MO.