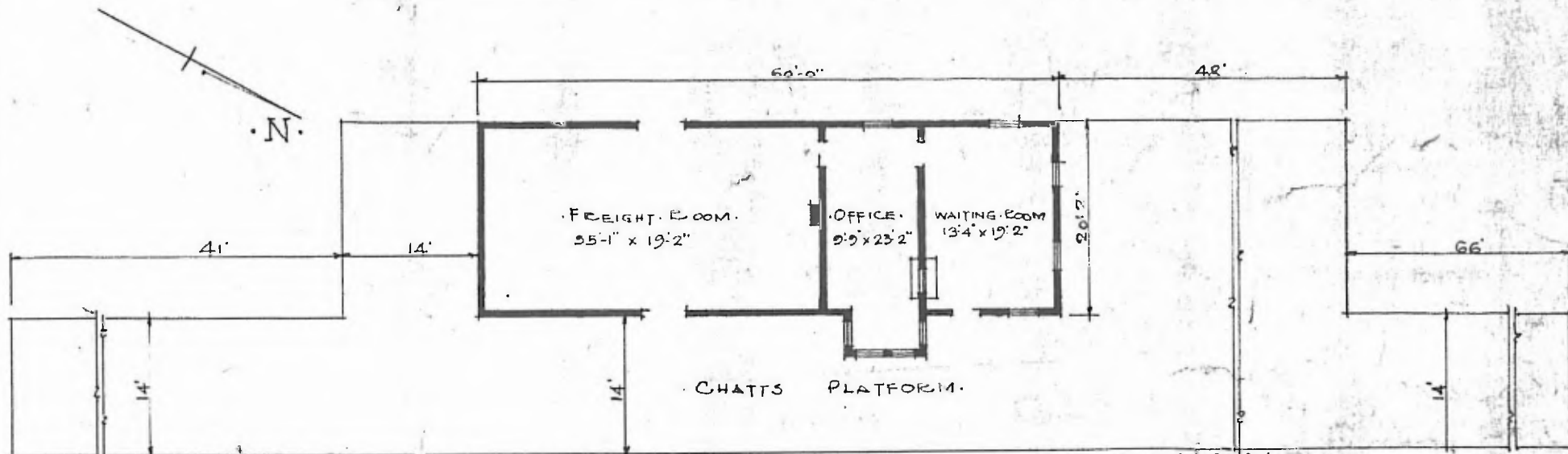


ERECTED. 1899.
 TYPE. FRAME
 FOUNDATION. STONE PIECES
 WALLS.
 ROOF { TYPE GABLE. SHINGLE.
 PITCH. 1/2
 HEATING STOVES

FLOOR. 3/4 x 3/4 Y. PINE.
 FINISH { INSIDE 3/4 x 3/4 BD. CEILING
 OUTSIDE 1x6" DROP SIDING
 CEILING HEIGHT. 13'2"
 LIGHTING LAMPS
 SANITARY FACILITIES OUTSIDE. TOILET



FLOOR PLAN.
 SCALE. 1/16" = 1'-0"

DIV. CENTRAL
 SUB. DIV. FT. SMITH
 STA. NO. B 367

AUG. 2. 1915.

COMBINATION STATION AT
 SOUTHWEST CITY, MO.