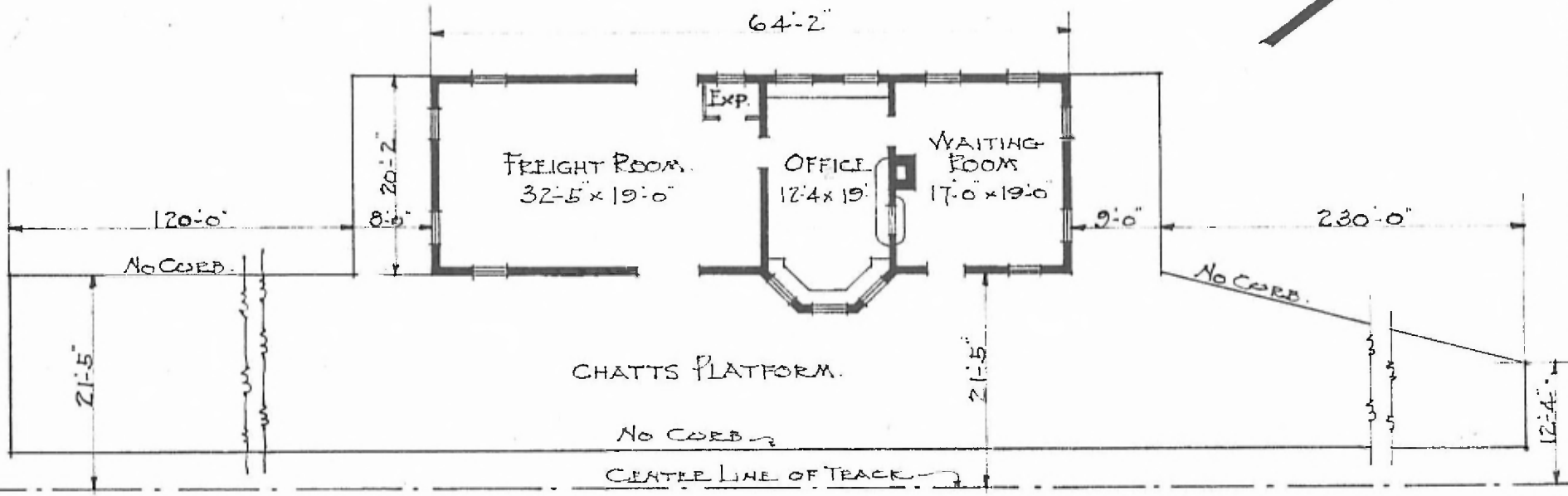
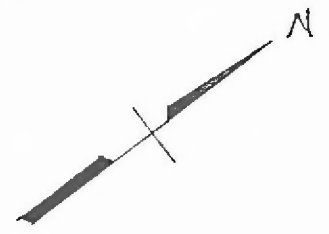


ERECTED 1914
 TYPE. FRAME.
 FOUNDATION. CONCRETE.
 WALLS. STUDS 2"x6"
 ROOF TYPE. H.I.F. SHINGLE.
 PITCH. 9 1/2 PER FOOT.
 HEATING STOVES.

FLOORS. 7/8"x3/4" PINE.
 FINISH { INSIDE. V. JOINT CEILING;
 OUTSIDE DROP SIDING
 CEILING HEIGHT. 11'-8"
 LIGHTING LAMPS.
 SANITARY FACILITIES. OUTSIDE.

EASTERN DIV.
 LEADERSHIP 1309
 S.P.A. No. 174

101



FLOOR PLAN.
 SCALE = 1/16" = 1'-0"

PASSENGER STATION.
 SLEEPER, MO.

DEC. 26. 1916.