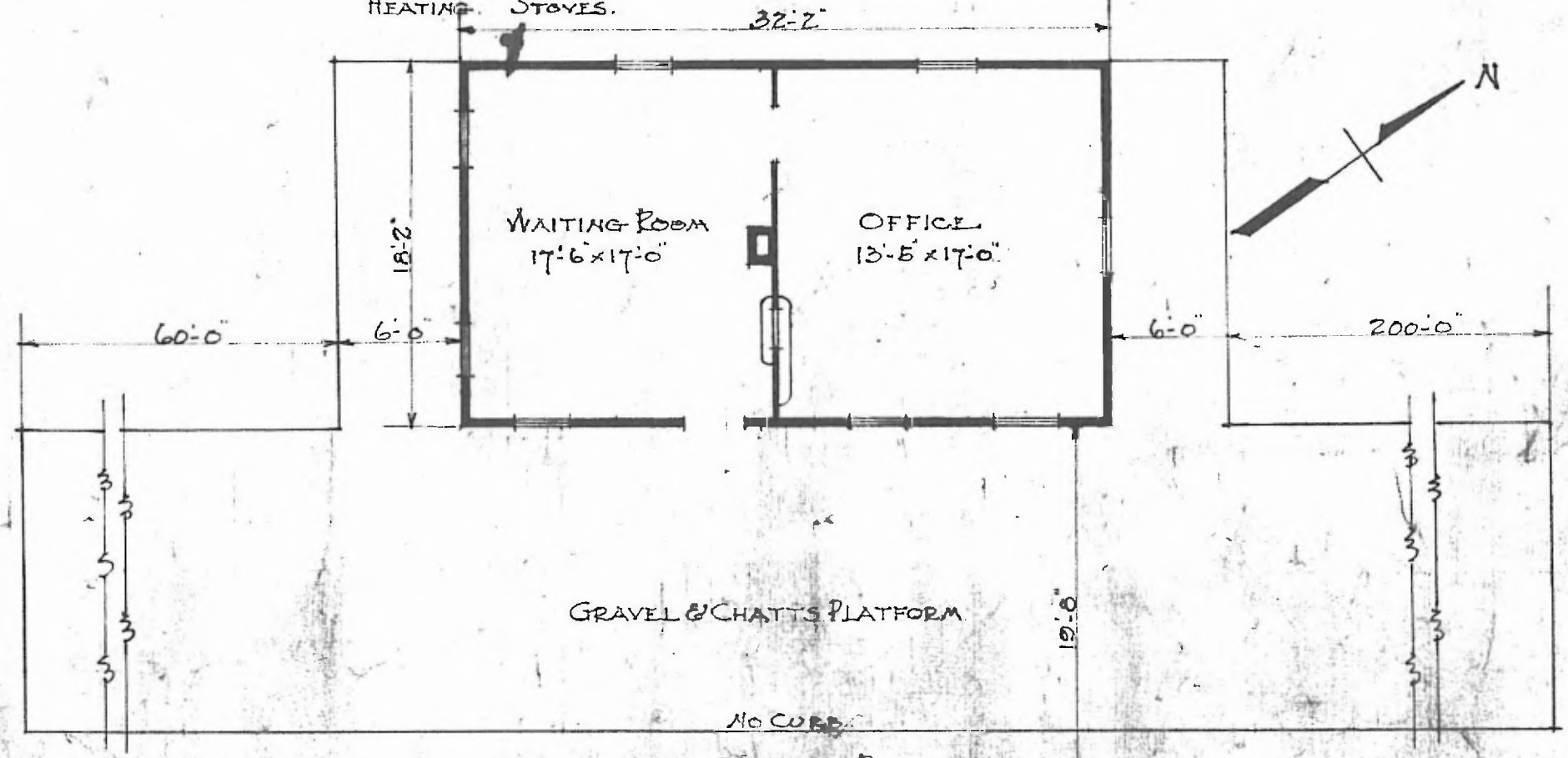


ERECTED 1894
 TYPE FRAME.
 FOUNDATION FILL HEADS.
 WALLS 2'x6'
 ROOF { TYPE GABLE. SHINGLE.
 PITCH 1/3
 HEATING STOVES.

FLOOR 7/8"x3 1/4"
 FINISH { INSIDE 7/8"x3 1/4" DEADED.
 OUTSIDE DROP SIDING.
 CEILING HEIGHT 11'-2"
 LIGHTING LAMPS.
 SANITARY FACILITIES OUTSIDE.

EASTERN DIV.
 LEAVENworth SUB
 STA. NO 194



COMBINATION STATION.
 PHILLIPSBURG, MO.

FLOOR PLAN.
 SCALE 1/8" = 1'-0"

DEC. 26. 1916.