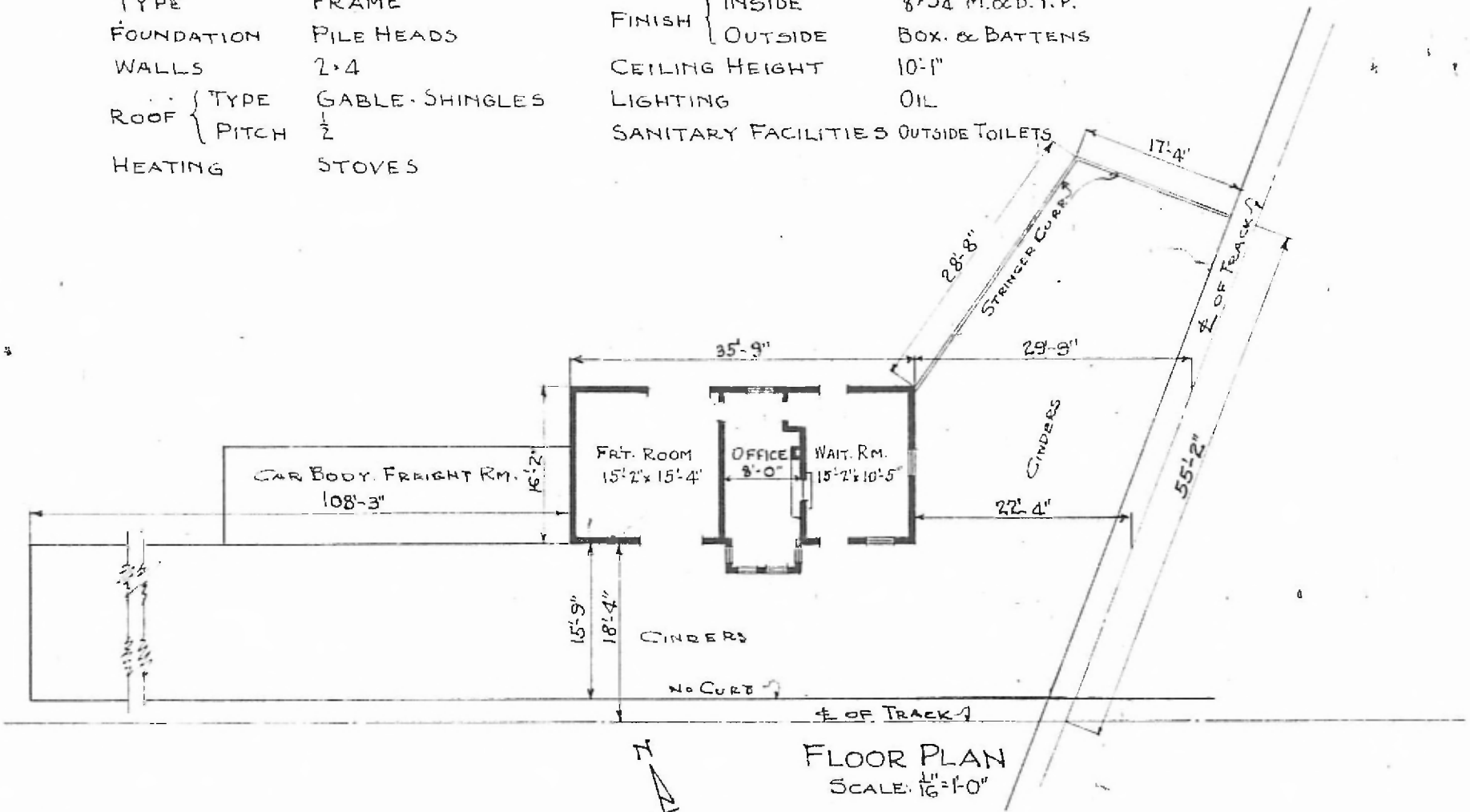


RIVER DIV.
LEARNVILLE SUB
STA. NO T F 217

ERECTED 1880
 TYPE FRAME
 FOUNDATION PILE HEADS
 WALLS 2-4
 ROOF { TYPE GABLE-SHINGLES
 PITCH 1/2
 HEATING STOVES

FLOOR 7/8 x 3/4
 FINISH { INSIDE 7/8 x 3/4 M. & B. Y. P.
 OUTSIDE BOX. & BATTENS
 CEILING HEIGHT 10'-1"
 LIGHTING OIL
 SANITARY FACILITIES OUTSIDE TOILETS



FLOOR PLAN
 SCALE: 1/16" = 1'-0"

COMBINATION STATION
 PASCOLA, MO.