

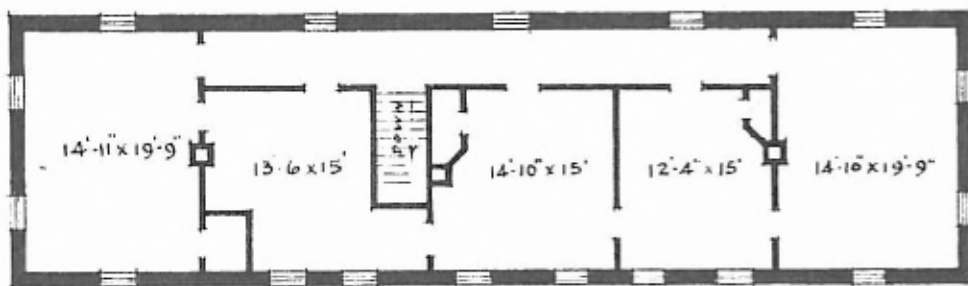
ERECTED 1897  
 TYPE STONE  
 FOUNDATION STONE  
 WALLS 17"  
 ROOF { TYPE - GABLE-SLATE SHINGLE-  
 PITCH - 10x12  
 HEATING STOVES

FLOOR 3/4" x 3/4" Y. PINE  
 FINISH { INSIDE  
 OUTSIDE  
 CEILING HEIGHT 10'-10" - FET R'M = 9'-0" - 2ND FL = 8'-10"  
 LIGHTING  
 SANITARY FACILITIES - OUTSIDE TOILETS.

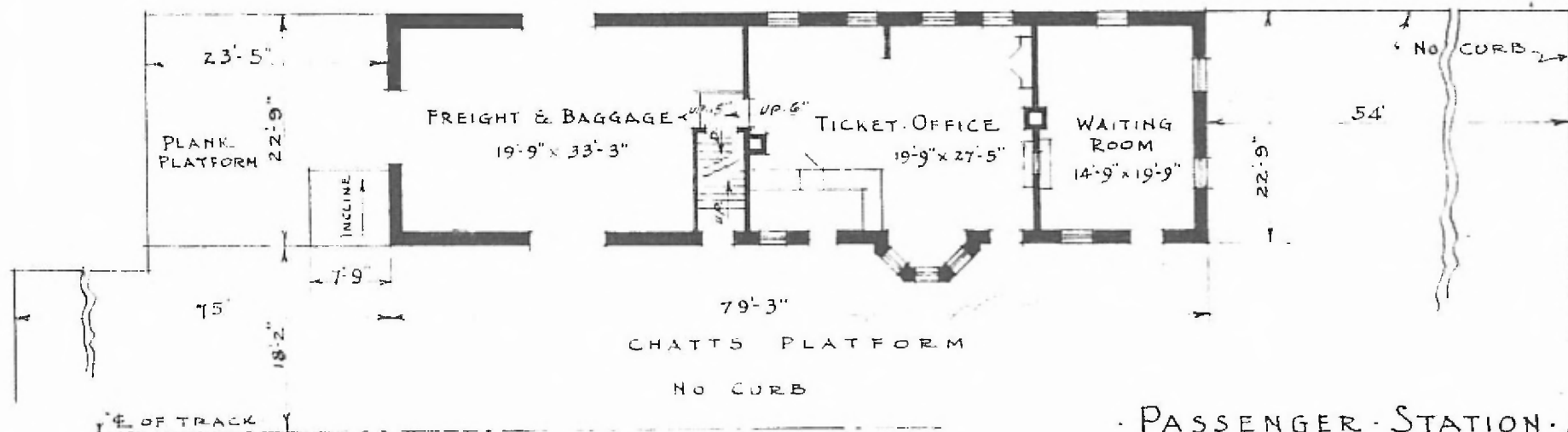
3/4" x 3/4" B'D CEILING - 2ND FL - PLASTER.  
 BROKEN ASHLAR  
 ELECTRIC

89

EASTERN RY  
 CLINTON SUB  
 STA. NO. D 112



· SECOND FLOOR PLAN ·



· FIRST FLOOR PLAN ·

· PASSENGER STATION AT ·  
 · OSCEOLA · MO ·

· JANUARY 3 1916 ·

· SCALE: 1/16" = 1'-0" ·

K