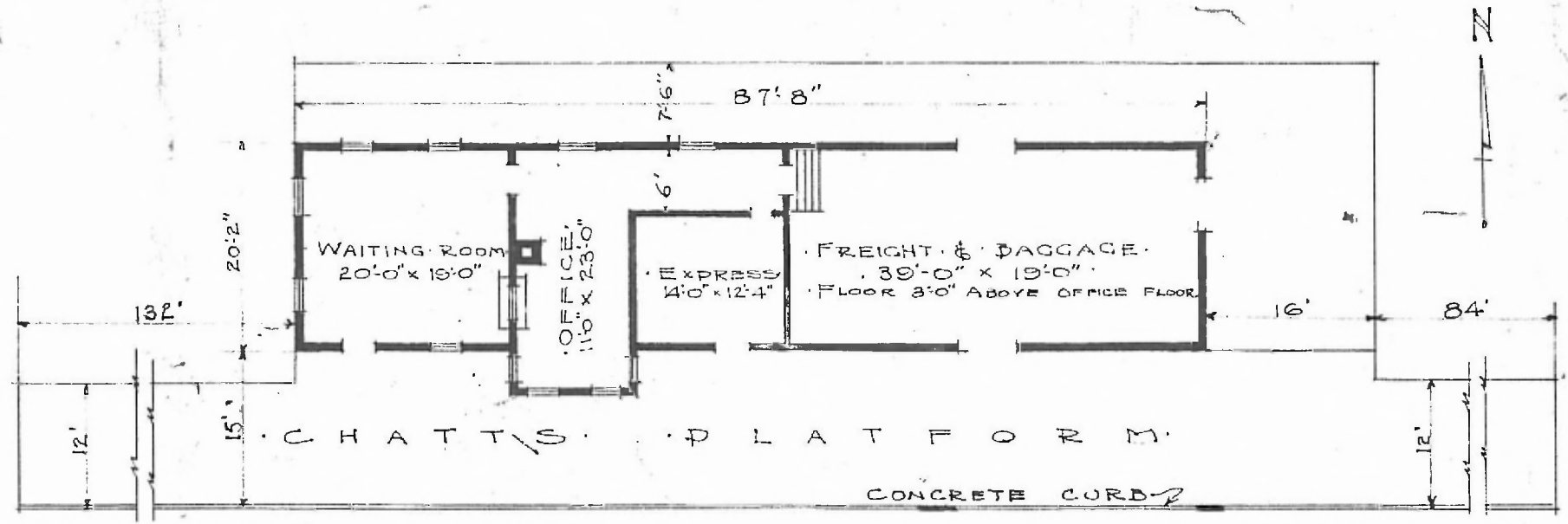


SOUTHERN DIV.  
 YELLOW SPRINGS SUB  
 STA. No C 260

7

- ERECTED.
- TYPE. FRAME
- FOUNDATION. WOOD BLOCKS
- WALLS. 2"x6"
- ROOF. { TYPE: GABLE, SHINGLES.  
 PITCH: 1/4
- HEATING. STOVES.

- FLOOR. 3/8"x3/4" Y.P.
- FINISH. { INSIDE: 3/8"x3/4" M.&B.  
 OUTSIDE: DROP SIDING
- CEILING HEIGHT. 11'-6"
- LIGHTING. OIL LAMPS
- SANITARY FACILITIES. OUTSIDE TOILET.



FLOOR PLAN  
 SCALE 1/16" = 1'-0"

COMBINATION STATION  
 NORWOOD MO.

JULY 7, 1916