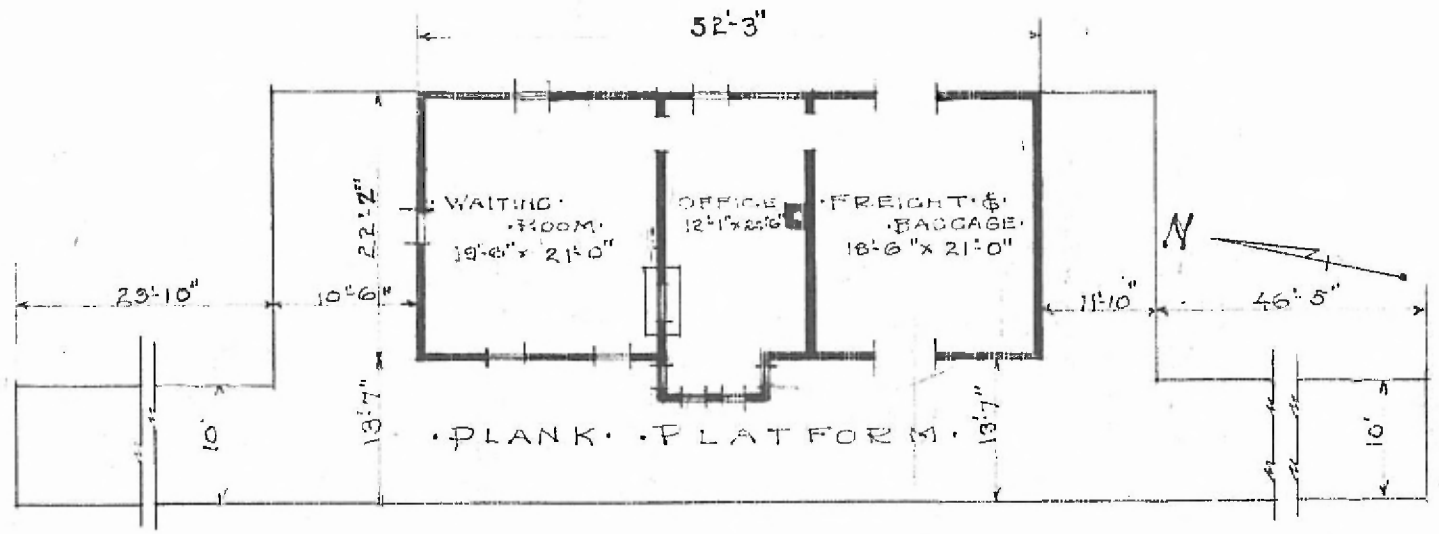


NORTHEAST DIV
ASH GROVE SUB
STATION B 186

ERECTED 1888.
TYPE FRAME.
FOUNDATION RUBLE STONE.
WALLS TYPE 2x6 WOOD SHG GABLE.
ROOF PITCH 1/4
HEATING STOVE 2.

FLOOR (INSIDE) 2" x 3 1/2" PINE.
FINISH (OUTSIDE) 3/4" x 3 1/2" BR CLG.
CEILING 1/2" x 3 1/2" BR CLG.
LIGHTING OIL LAMPS
SANITARY FACILITIES OUTSIDE TOILETS.



FLOOR PLAN.
SCALE 1/16" = 1'-0"