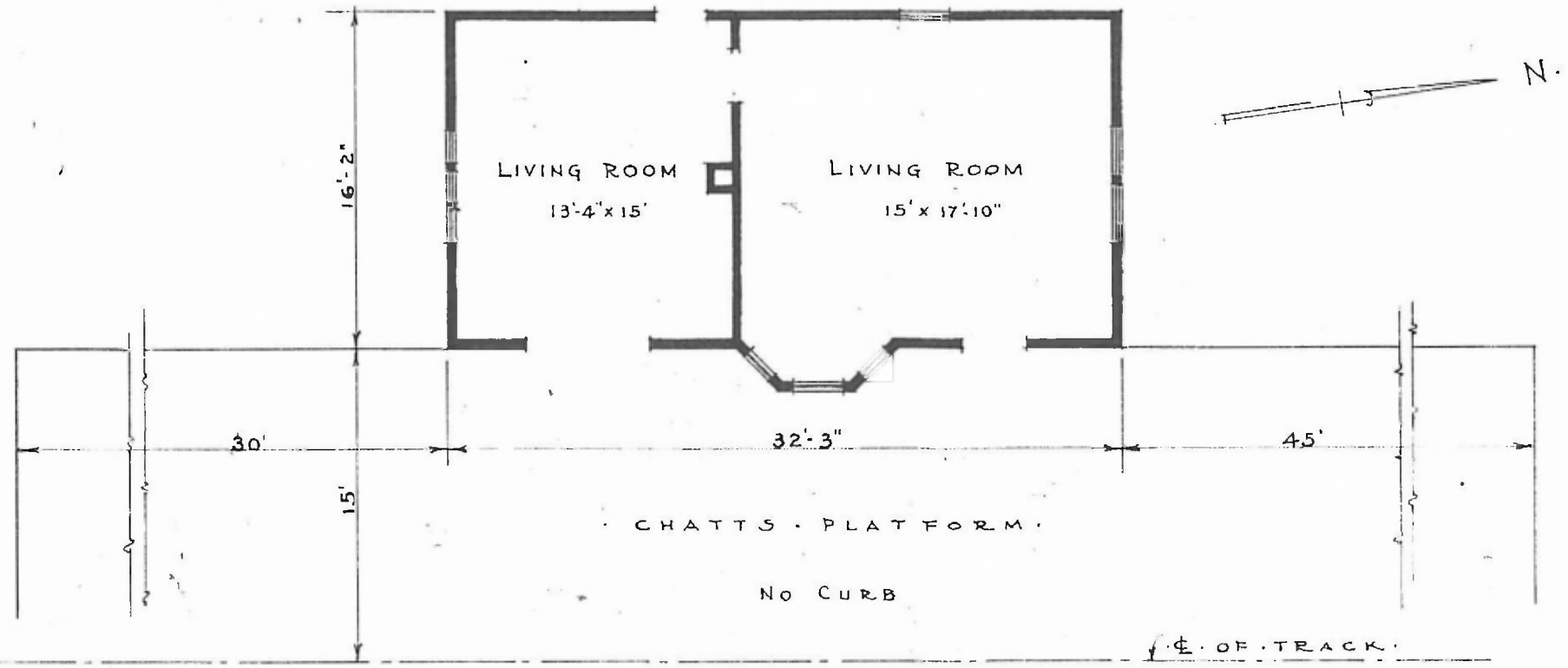


70

ERECTED
 TYPE FRAME
 FOUNDATION PILE HEADS
 WALLS 2"x4"
 ROOF { TYPE - HIP GABLE - SHINGLES.
 PITCH - 1/3
 HEATING STOVES

FLOOR
 FINISH { INSIDE
 OUTSIDE
 CEILING HEIGHT 10'-2"
 LIGHTING OIL LAMPS
 SANITARY FACILITIES - OUTSIDE TOILETS

3/4" x 3/4" Y. PINE
 3/4" x 3/4" BD. CEILING
 1"x6" DROP SIDING
 EASTERN DIV.
 CLINTON SUB
 STA. No. D10



PASSENGER STATION AT
 LEEDS MO

FLOOR PLAN
 SCALE: 1/8" = 1'-0"

NOTE: NOT USED FOR STATION PURPOSES

JUNE 15 1916