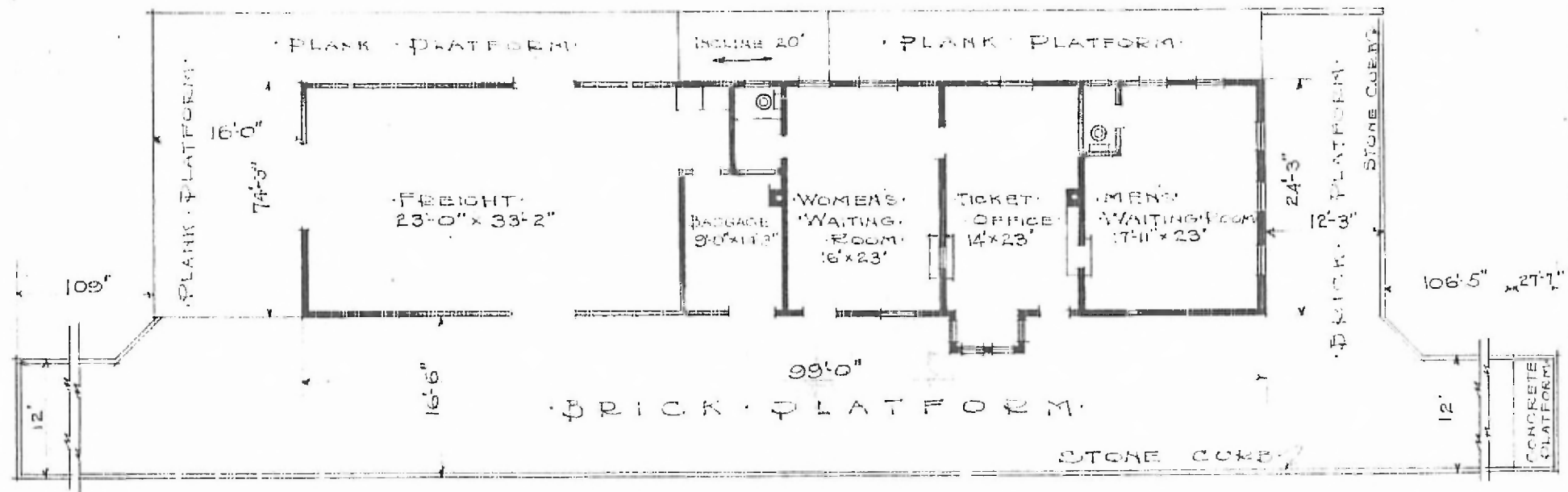


•ERECTED: 1881
 •TYPE: FRAME
 •FOUNDATION:
 •WALLS: 2x6"
 •ROOF: { TYPE: GABLE, SLATE
 PITCH: 1/3
 •HEATING: STOVES

•FLOOR: 2 1/4" x 2 1/4" Y.P.
 •FINISH: (INSIDE: 3 1/4" x 5 1/4" M.L.B.
 (OUTSIDE: BOARDS & BATTENS
 •CEILING HEIGHT: 13'-9"
 •LIGHTING: ELECTRIC
 •SANITARY FACILITIES: INSIDE TOILETS

NORTH BAY DIV.
 75TH GROVE SUB
 STA. No. C 139

(49)



•FLOOR PLAN
 SCALE 1/16" = 1'-0"

•COMBINATION STATION
 •LAMAR MO.

Nov. 9, 1915.