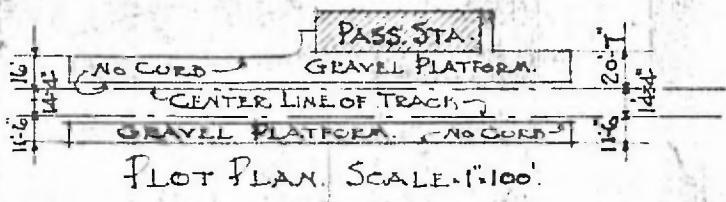


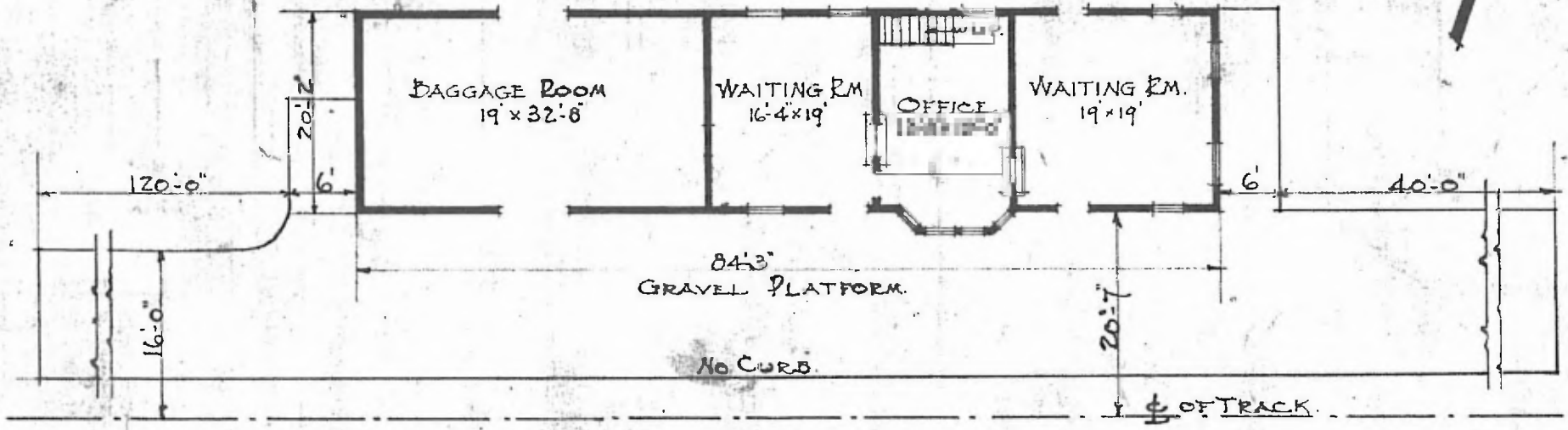
EASTERN DIV.  
ROLL A. 900  
5-2-78. 13

ERECTED  
TYPE FRAME  
FOUNDATION PILE HEADS  
WALLS 2x6  
ROOF { TYPE GABLE SHINGLE.  
PITCH 1/3  
HEATING STOVES.

FLOOR 7/8 x 3 1/4 PINE.  
FINISH { INSIDE 7/8 x 3 1/4 BEADED.  
OUTSIDE BOARDS & BATTONS.  
CEILING HEIGHT 11.5' OFFICE 10.6'  
LIGHTING ELECTRIC 2 WIRE 110 A.C.  
SANITARY FACILITIES OUTSIDE.



PLOT PLAN. SCALE 1"=100'



FIRST FLOOR  
SCALE 1/16"=1'-0"

PASSENGER STATION  
KIRKWOOD, MO.

JAN. 27. 1917.