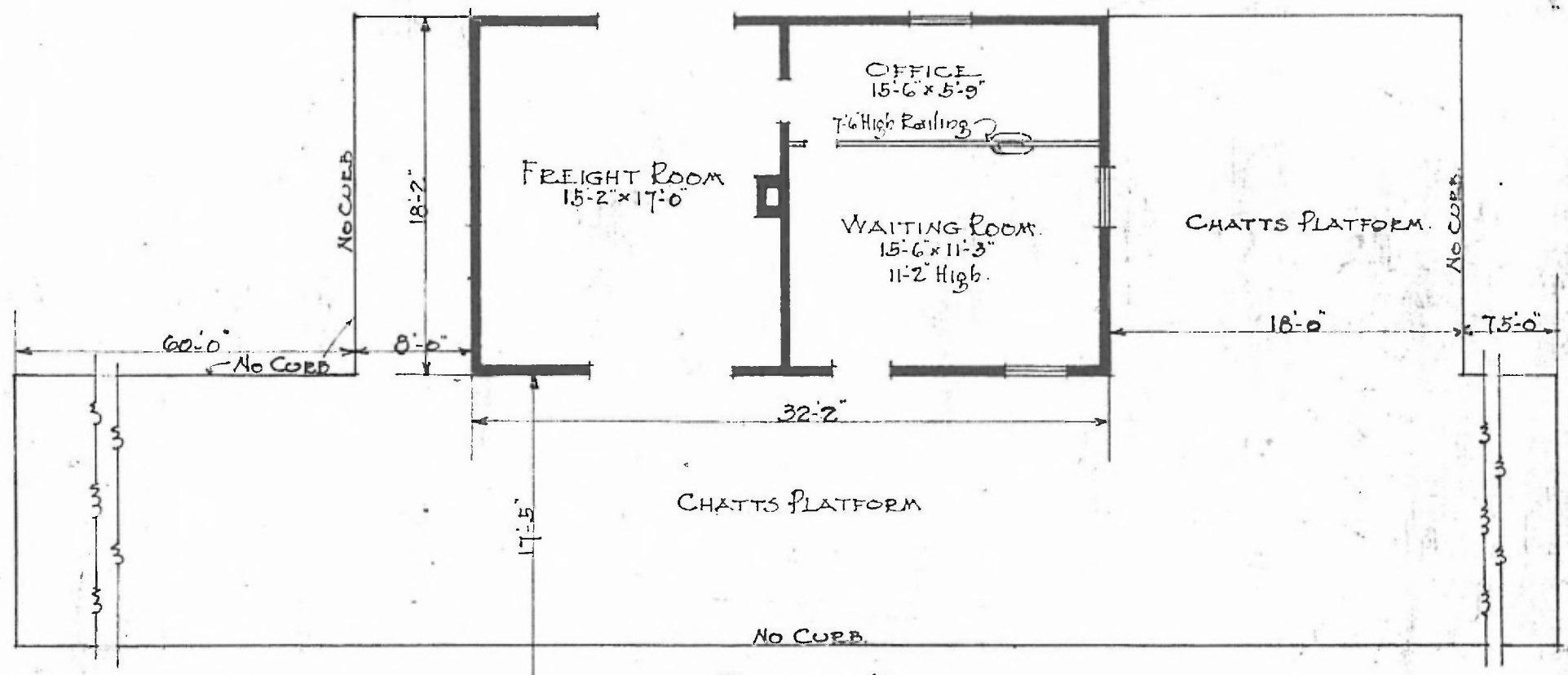


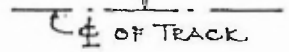
ERECTED 1888
 TYPE FRAME
 FOUNDATION PILE HEADS
 WALLS 2x6
 ROOF { TYPE GABLE SHINGLE
 PITCH 1/3
 HEATING STOVES

FLOOR 7/8 x 3 1/4 PINE
 FINISH { INSIDE 7/8 x 3 1/4 DEAVED
 OUTSIDE DROP SIDING
 CEILING HEIGHT 11'-2"
 LIGHTING LAMPS
 SANITARY FACILITIES OUTSIDE

EASTERN DIV.
 LEIBANON S.D.
 STA. NO. 140



PASSENGER STATION
 HANCOCK, MO.



FLOOR PLAN
 SCALE 1/8" = 1'-0"

DEC. 21. 1916.