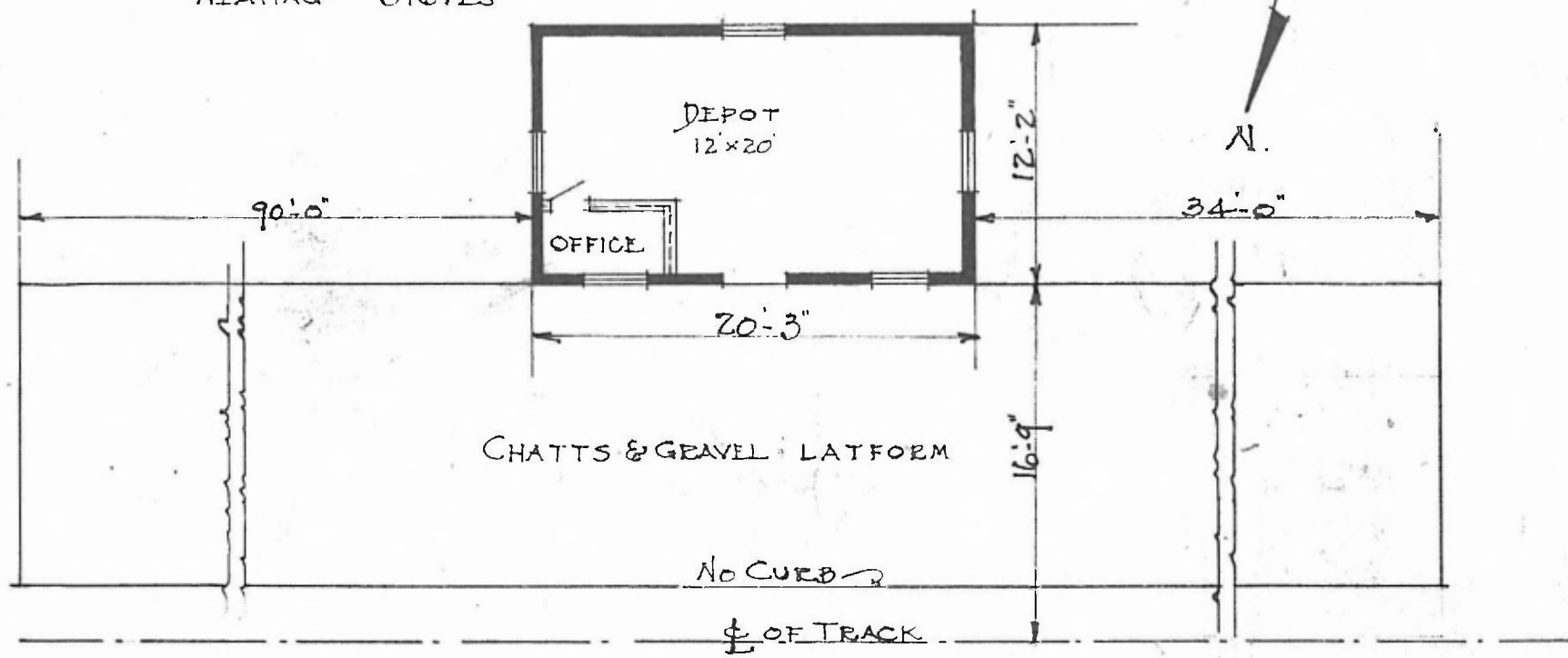


ERECTED
 TYPE. FRAME
 FOUNDATION. PILE HEADS
 WALLS 2"x6"
 ROOF { TYPE. GABLE. SHINGLE.
 PITCH. 1/3
 HEATING STOVES

FLOOR 7/8"x3 1/4" PINE
 FINISH { INSIDE 7/8"x3 1/4" BEADED.
 OUTSIDE. BOARDS & BATTONS.
 CEILING HEIGHT. 10'-6"
 LIGHTING LAMPS.
 SANITARY FACILITIES. NONE.

EASTERN DIV.
 ROLLING SUB
 STAM NO 12A



FLOOR PLAN
 SCALE 1/8"=1'-0"

PASSENGER STATION.
 FAIRLAWN MO.

JAN. 26. 1917.