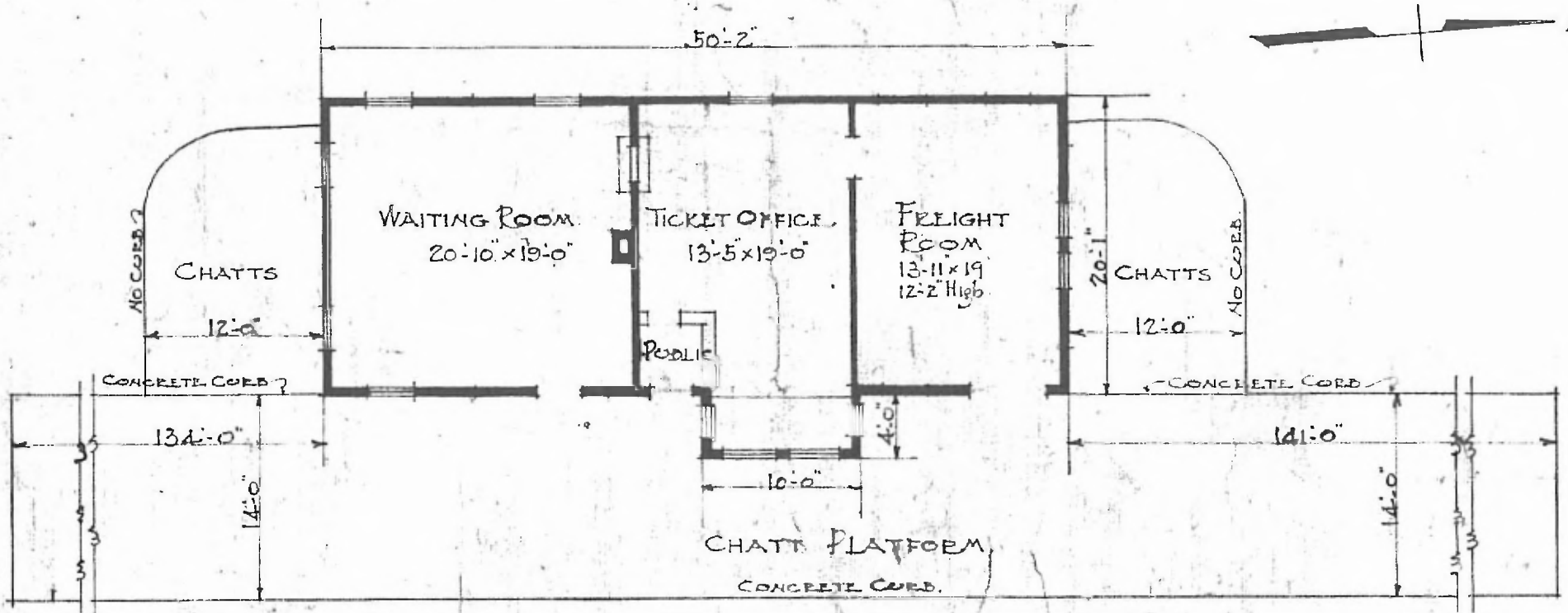


ERECTED 1892  
 TYPE. FRAME.  
 FOUNDATION PILE HEADS  
 WALLS 2"x6"  
 ROOF { TYPE GABLE. SHINGLE.  
 PITCH 1/3  
 HEATING. STOVES

FLOORS 7/8"x3 1/4" PINE.  
 FINISH { INSIDE 7/8"x3 1/4" BEADED.  
 OUTSIDE. BOARDS & BATTENS.  
 CEILING HEIGHT. 12'-2"  
 LIGHTING LAMPS  
 SANITARY FACILITIES. OUTSIDE.

EASTERN DIV  
 KEBBYON SUB  
 STA. No. 198

45



FLOOR PLAN  
 SCALE 3/32" = 1'-0"

COMBINATION STATION  
 CONWAY, MO.

DEC. 20 1916