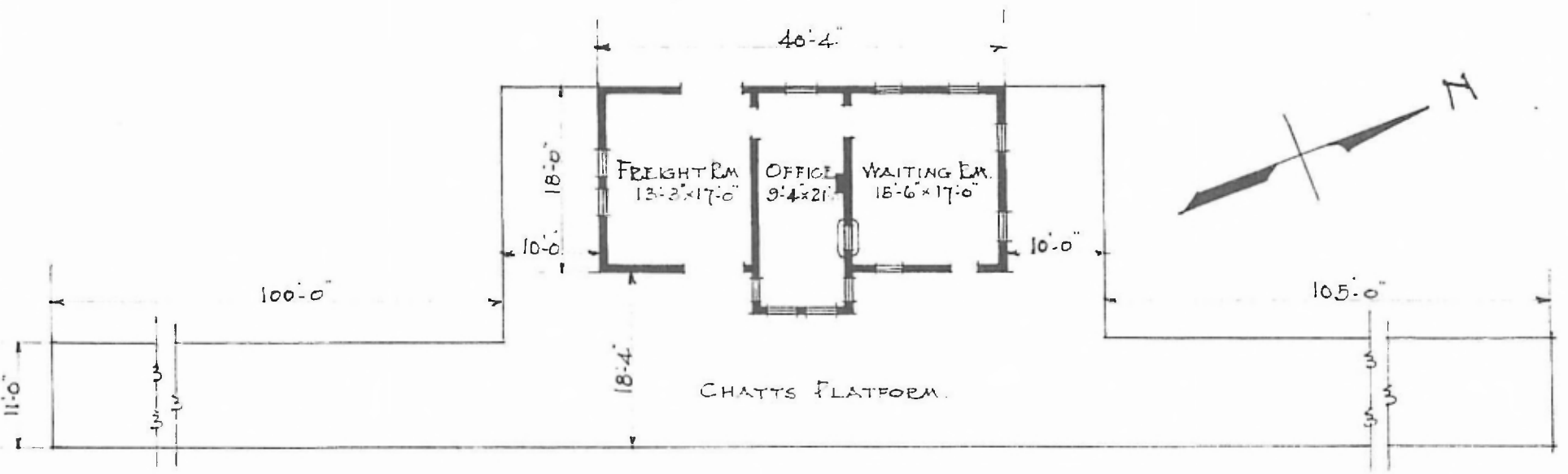


ERECTED . 1884
 TYPE . FRAME.
 FOUNDATION . PILE HEAD.
 WALLS . 2" X 6"
 ROOF { TYPE . GABLE . SHINGLE.
 PITCH . $\frac{1}{4}$
 HEATING . STOVES.

FLOOR . $\frac{7}{8} \times 3\frac{1}{4}$
 FINISH { INSIDE . DOXING & BATTENS
 OUTSIDE . $\frac{7}{8}$ " DEEP SIDING
 CEILING HEIGHT 11'-
 LIGHTING . LAMPS.
 SANITARY FACILITIES . OUTSIDE

EASTERN DIV.
 SPRINGFIELD SUB
 STA. NO. 247



FLOOR PLAN.
 SCALE . $\frac{1}{16} = 1'-0"$