

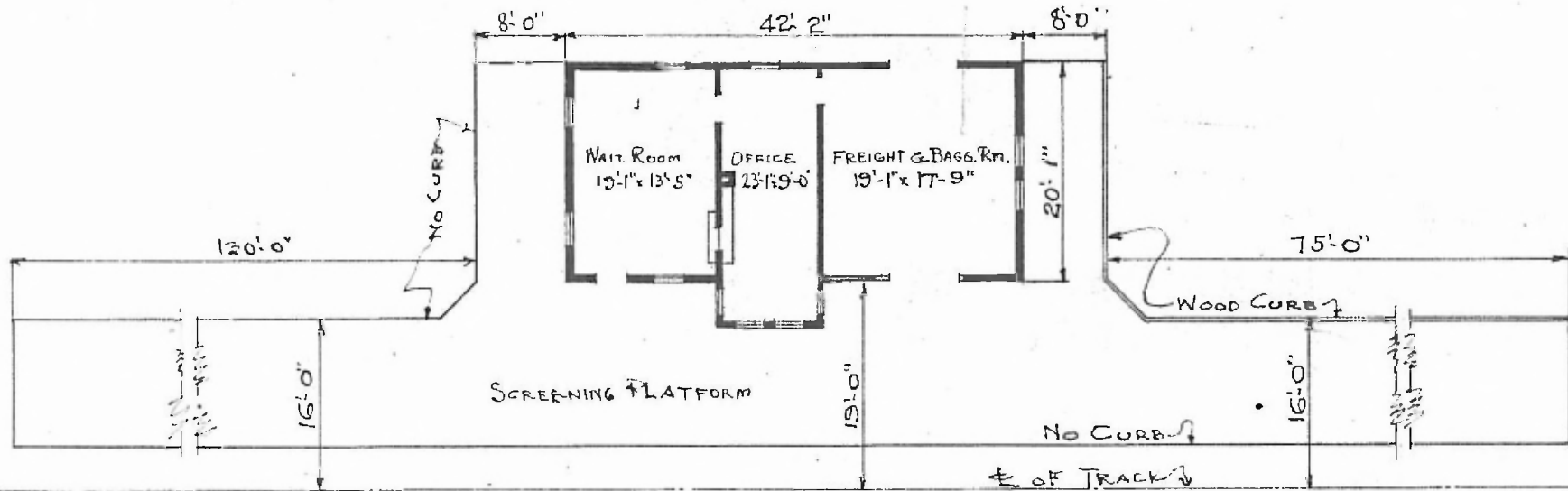
4

ERECTED 1903  
 TYPE FRAME  
 FOUNDATION PILE  
 WALLS 2x6"  
 ROOF { TYPE GABLE SHINGLES  
 PITCH  $\frac{1}{3}$   
 HEATING STOVES

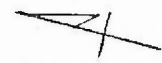
FLOOR  
 FINISH { INSIDE  
 OUTSIDE  
 CEILING HEIGHT 11'-10"  
 LIGHTING OIL LAMPS  
 SANITARY FACILITIES OUTSIDE TOILETS

$\frac{3}{4}$ "  
 $4 \times 3\frac{1}{2}$ " Y.P.  
 $\frac{3}{4}$ "  
 $4 \times 3\frac{1}{2}$ " BEEDED CEILING  
 BOARDS & BATTENS - 1x6" DROP SIDING

Sta. T29  
 Subst. down  
 Div. River



FLOOR PLAN  
 SCALE:  $\frac{1}{16}$ " = 1'-0"



COMBINATION STATION  
 BARNHART, MO.

Oct. 20, 1919