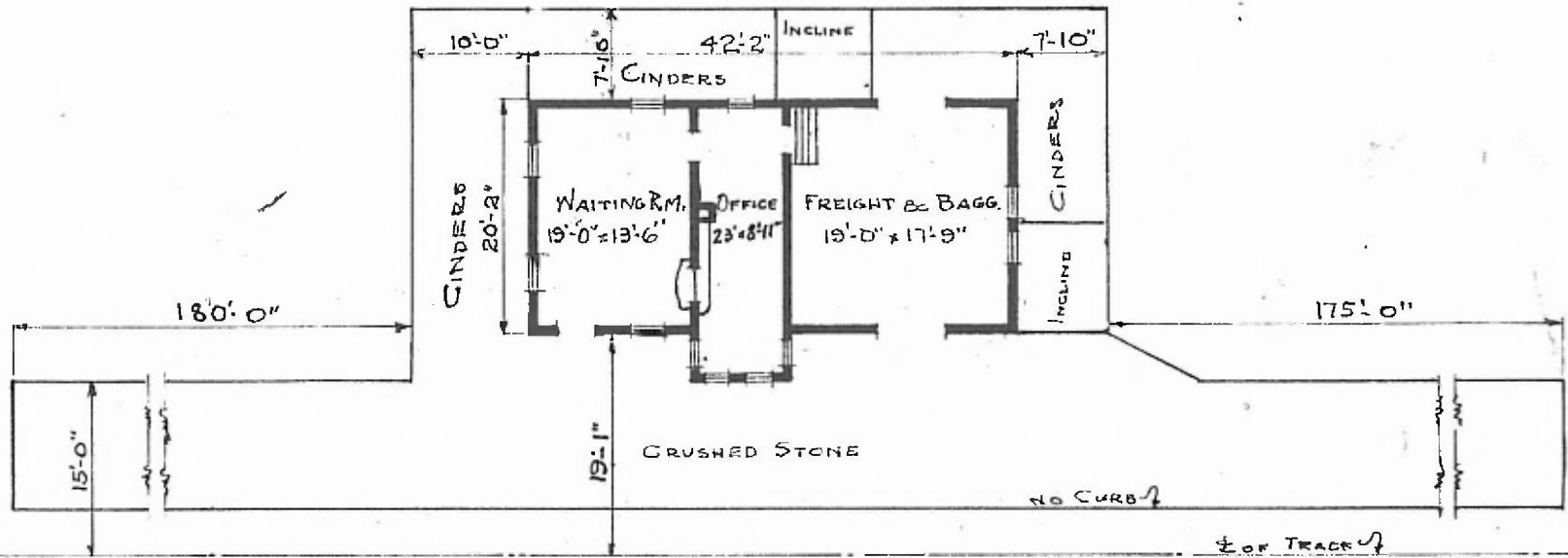


20

ERECTED 1903  
 TYPE FRAME  
 FOUNDATION PILE HEADS  
 WALLS 2x6  
 ROOF { TYPE GABLE-SHINGLES  
 PITCH 1/3  
 HEATING STOVES

FLOOR  
 FINISH { INSIDE  
 OUTSIDE  
 CEILING HEIGHT  
 LIGHTING  
 SANITARY FACILITIES

RIVER DIV.  
 ST. LOUIS SUB  
 STA. NO. T122  
 3/4 x 3 1/4 Y.P.  
 3/4 x 3 1/4 BEEDED  
 BOARDS & BATT. 1 1/2" DROP SIDING  
 WAITING RM. 11'-4" - FREIGHT RM. 8'-9"  
 OIL LAMPS  
 OUTSIDE TOILETS



FLOOR PLAN  
 SCALE: 1/16" = 1'-0"



COMBINATION STATION  
 BAINBRIDGE, MO.

Aug. 2, 1917