

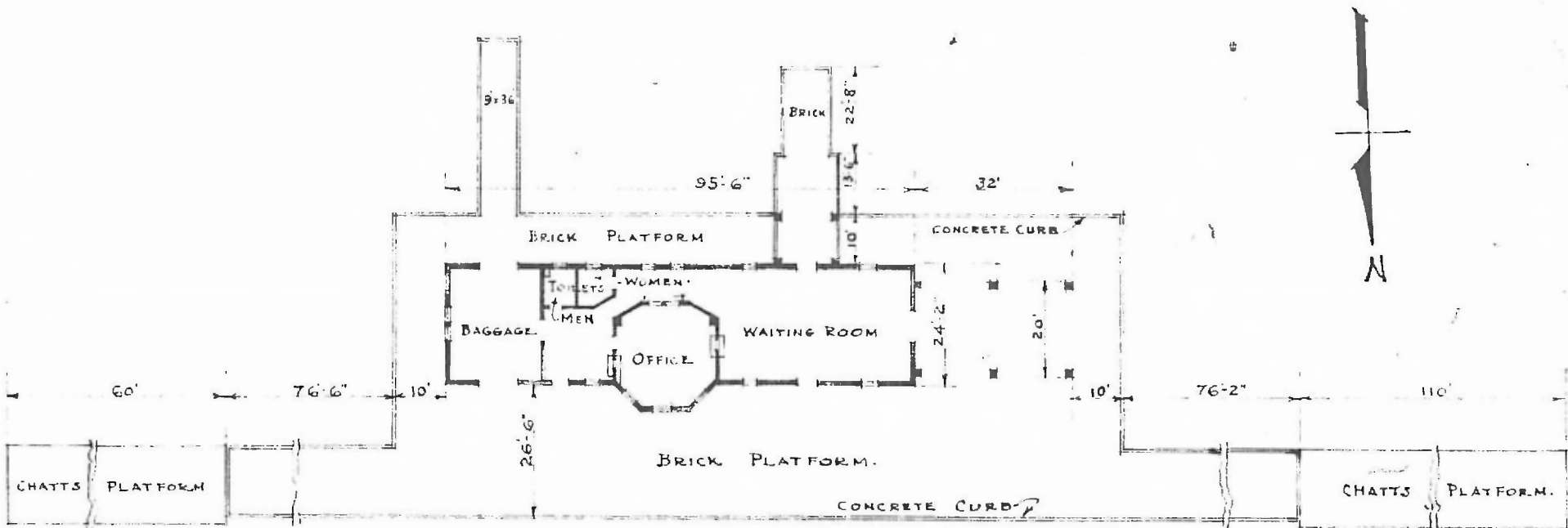
ERECTED 1906
 TYPE BRICK
 FOUNDATION CONCRETE
 WALLS 13"
 ROOF TYPE - HIP - TILE
 PITCH - 1/3
 HEATING STOVES

FLOOR FINISH } INSIDE
 } OUTSIDE
 CEILING HEIGHT
 LIGHTING
 SANITARY FACILITIES - INSIDE TOILETS

7/8 x 3/4" MAPLE -
 PLASTER
 BRICK -
 13'-0" BAGGAGE ROOM 13'-7"
 ELECTRIC - 2 WIRE - 110 AC.

EASTERN DIV.
 SPRINGFIELD SUB
 STA. NO. 269

57



FLOOR PLAN
 SCALE: 1/32" = 1'-0"

PASSENGER STATION AT
 AURORA MO.