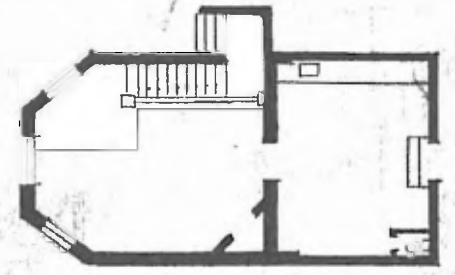
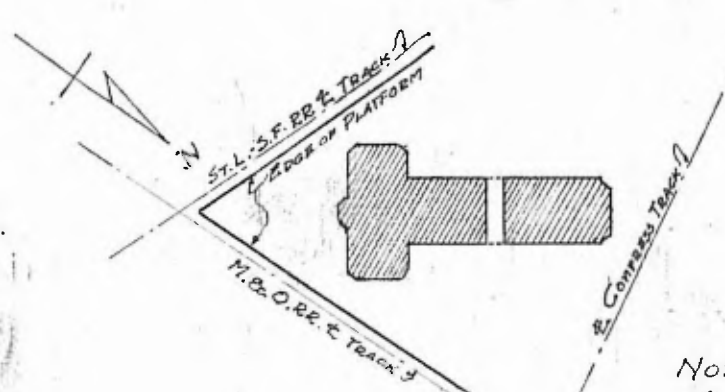
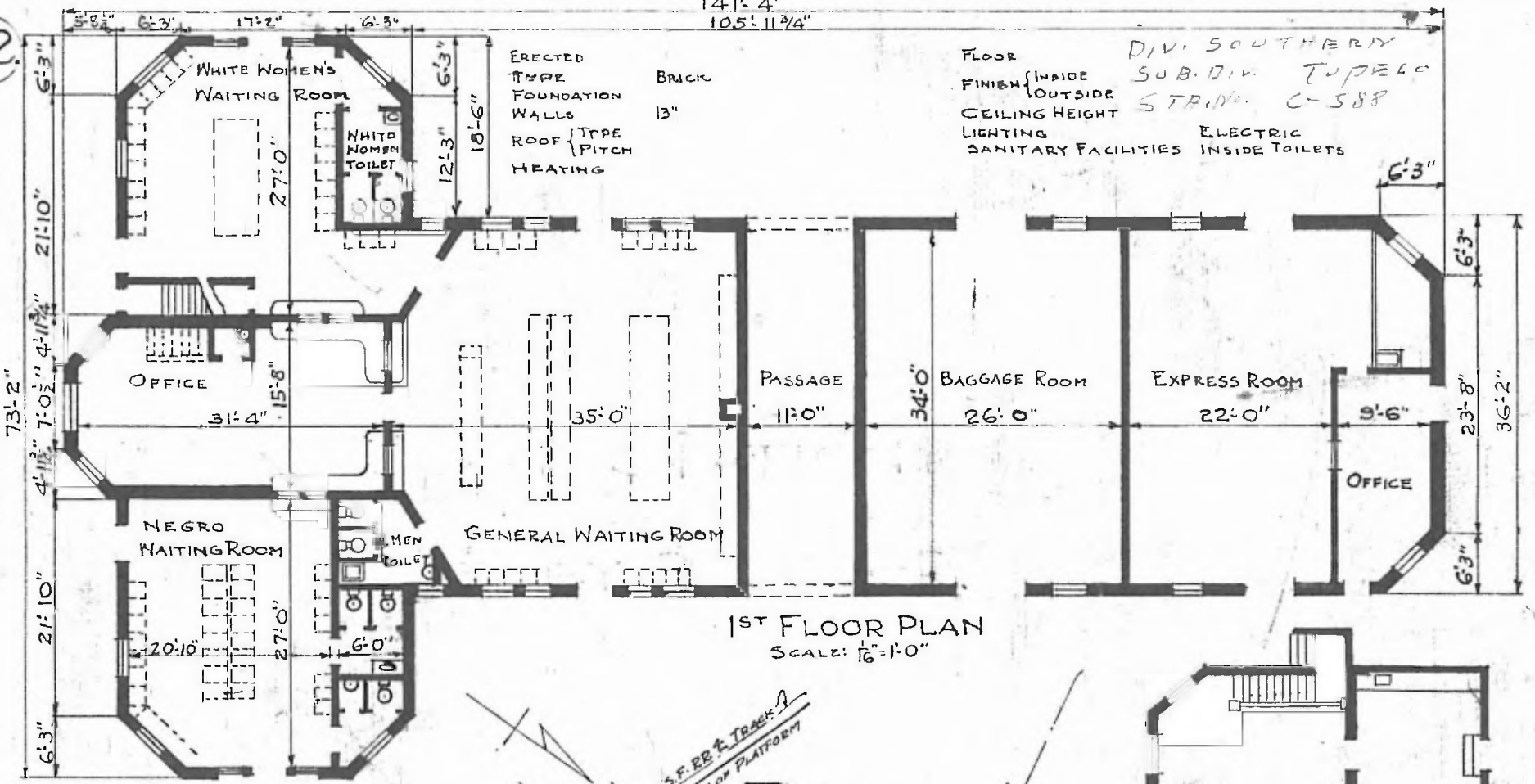


62.

14'-4"
105'-11 3/4"



FLOOR FINISH { INSIDE SUB. DIV. TUPELO STR. DIV. C-588 }
 CEILING HEIGHT ELECTRIC LIGHTING SANITARY FACILITIES INSIDE TOILETS

ERECTED TYPE BRICK
 FOUNDATION 13"
 WALLS 13"
 ROOF TYPE PITCH
 HEATING

ST. L. S. F. R.R. & M. & O. R.R.
 JOINT PASSENGER STATION
 TUPELO, MISS.

Note: This Station was drawn from Office Plans