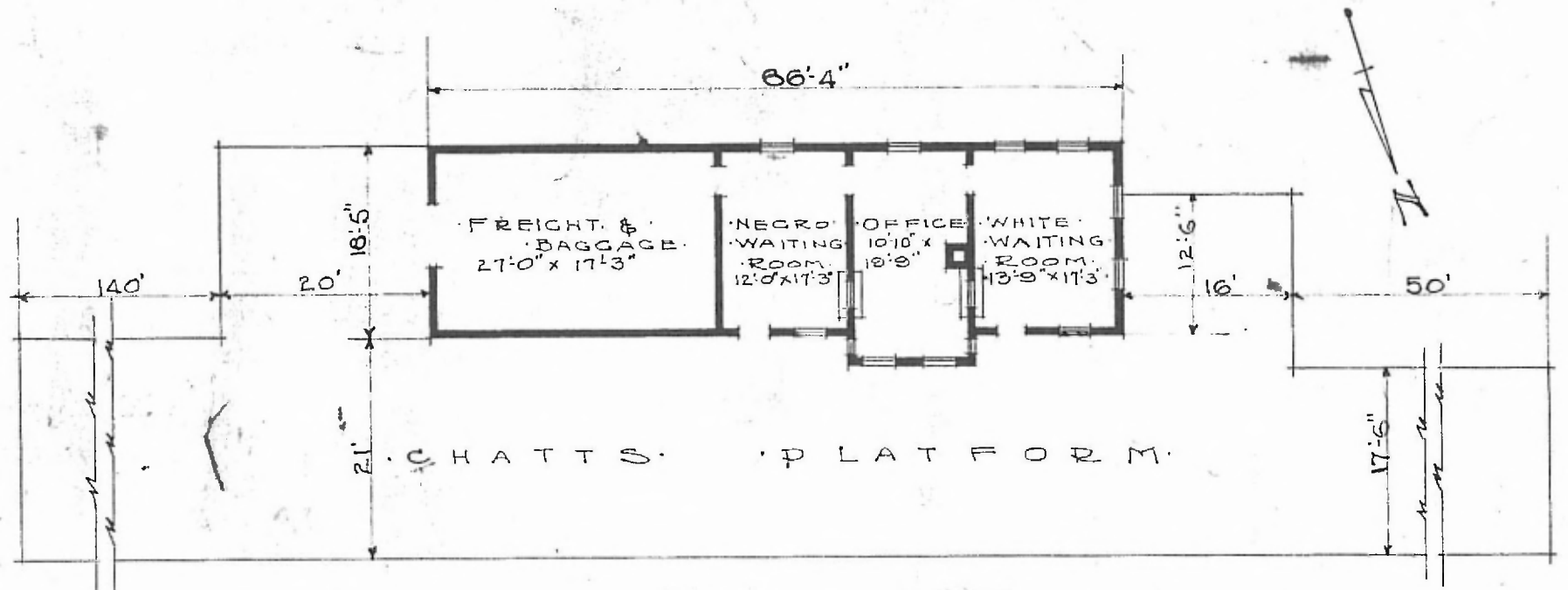


·ERECTED·
 ·TYPE· FRAME
 ·FOUNDATION· WOOD BLOCKS.
 ·WALLS· 2"x6"
 ·ROOF· TYPE: GABLE, SHINGLES
 PITCH: 4
 ·HEATING· STOVES

·FLOOR·
 ·FINISH· (INSIDE·
 OUTSIDE·
 ·CEILING HEIGHT·
 ·LIGHTING· OIL LAMPS.
 ·SANITARY FACILITIES· OUTSIDE TOILETS

DIV. SOUTHERN
 SUB. DIV. BIRMINGHAM
 ST. NO. C 629

75



·FLOOR PLAN·
 SCALE 1/16" = 1'-0"

·COMBINATION STATION·
 ·GATMAN MISS·

JULY 2, 1919