

64

DIV. SOUTHERN
SUB-DIV. TUPELO

ERECTED. 1916.
TYPE. FRAME.

FLOOR. CINDERS.
FINISH { INSIDE. STUDS EXPOSED.
 { OUTSIDE. BOXING & BATTENS

STA. No. C 595

FOUNDATION. BLOCKS.

CEILING HEIGHTS. WAITING RM. 8'

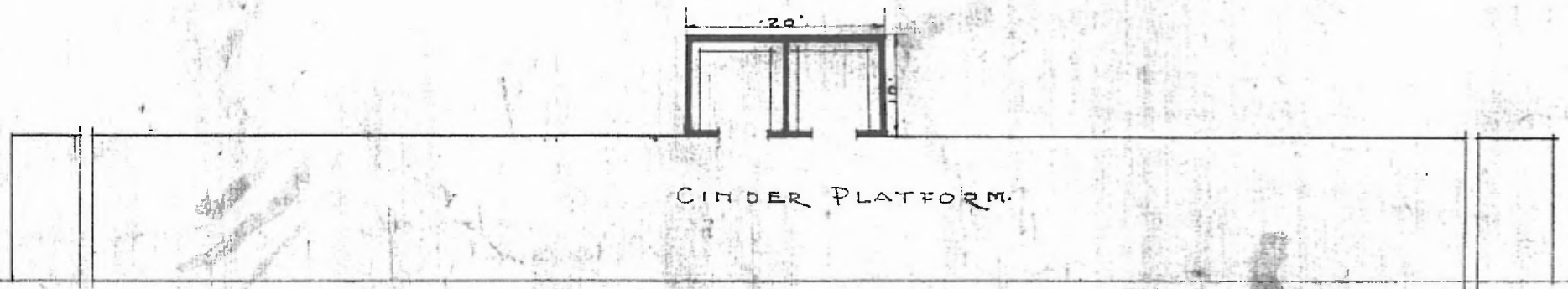
WALLS. 2x6"

LIGHTING. NONE.

ROOF { TYPE. RUBBEROID FLAT HIP.
 { PITCH. 3" PER FOOT.

SANITARY FACILITIES. NONE.

HEATING. NONE.



CINDER PLATFORM.

MAINTENANCE

FLOOR PLAN.
SCALE 1/16" = 1'0"

PASSENGER STATION
CITY POINT MISS.

JUNE 29, 1918.