

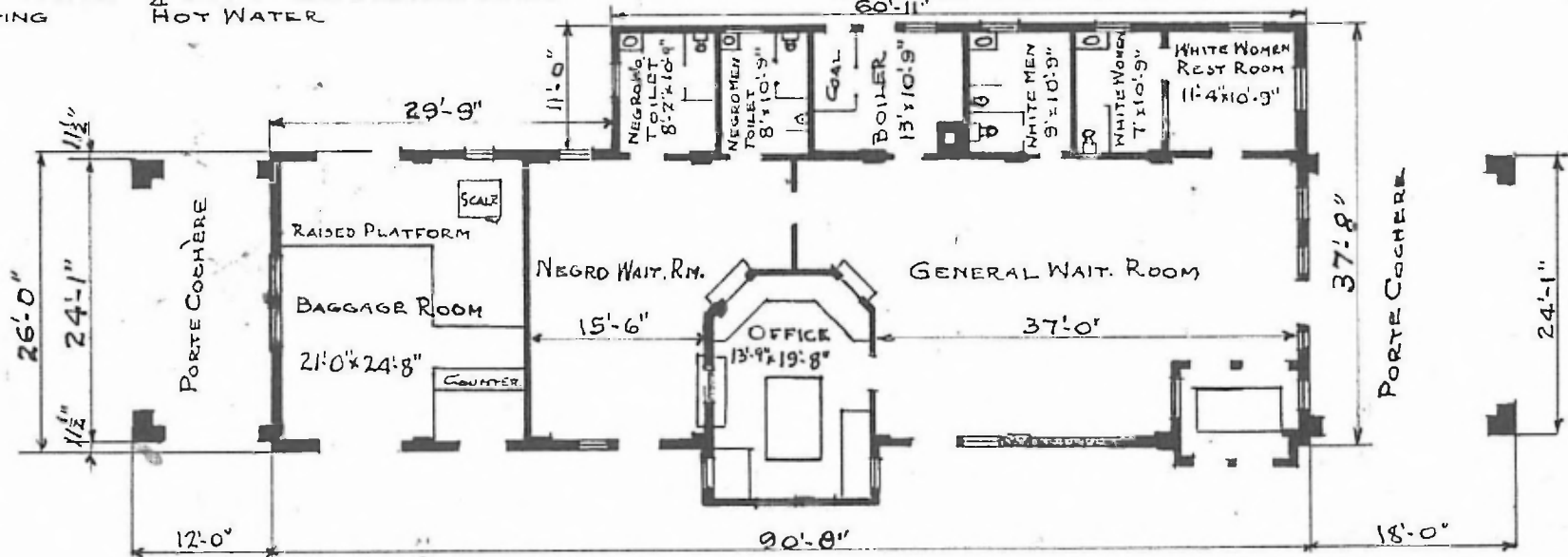
ERECTED 1916
 TYPE TILE
 FOUNDATION CONCRETE
 WALLS 8" TILE
 ROOF { TYPE FLAT
 PITCH 3" TO 1'-0" - COMPOSITION ROOFING
 HEATING HOT WATER

FLOOR 6" CONCRETE
 FINISH { INSIDE PLASTER
 OUTSIDE STUCCO
 CEILING HEIGHT 12'-0"
 LIGHTING ELECTRIC
 SANITARY FACILITIES INSIDE TOILETS

St. C. 611
 Sub. Tupelo
 Div. Southern

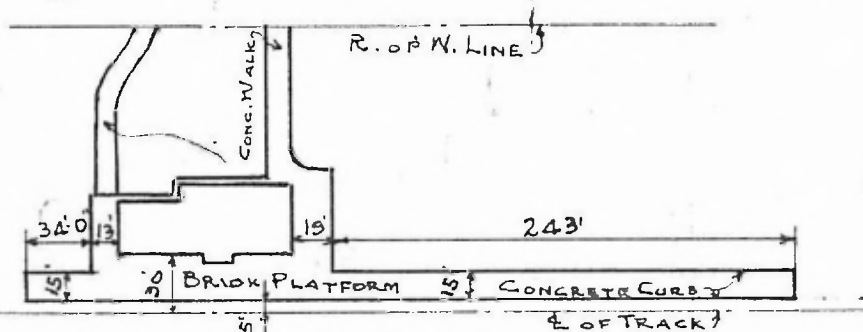
71

C611



PLANS IN OFFICE

FLOOR PLAN
 SCALE: 1/16" = 1'-0"



PLATFORM PLAN
 SCALE: 1" = 100'

PASSENGER STATION
 AMORY, MISS.