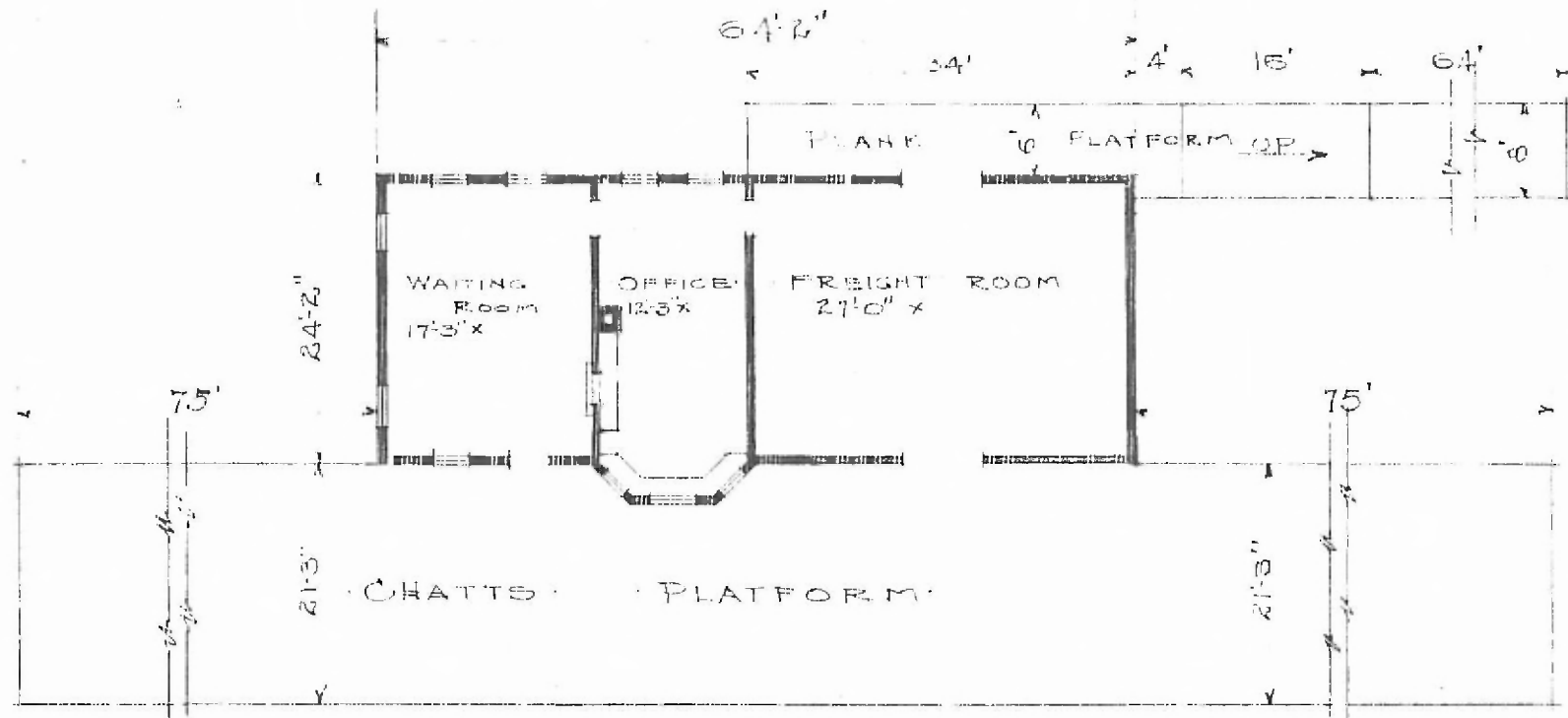


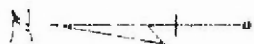
ERECTED 1918
 TYPE FRAME
 FOUNDATION CONCRETE
 WALLS 2" x 6"
 ROOF (TYPE) HIP SHINGLES
 (PITCH) 1/2
 HEATING STOVES

FLOOR
 FINISH INSIDE
 (OUTSIDE)
 CEILING HEIGHT 11'4"
 LIGHTING ELECTRIC
 SANITARY FACILITIES OUTSIDE TOILETS

DIV. NORTHERN
 SUB DIV. PARSONS
 STA. 126 MA-145 (67)



FLOOR PLAN
 SCALE 1/16" = 1'-0"



COMBINATION STATION
 WEIR, KANS.

Nov. 5, 1919.