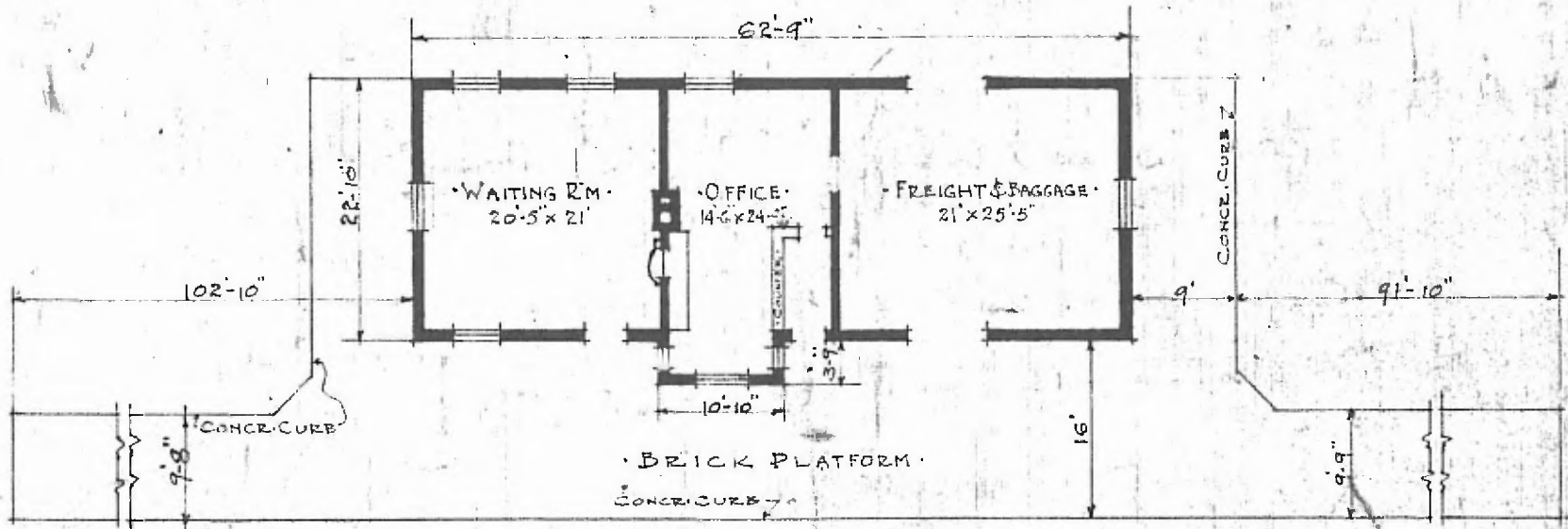


16

DIV. NORTHERN
SUB. DIV. KANSAS CITY
STA. NO. C-30

ERECTED. 1901.
 TYPE. STONE.
 FOUNDATION. STONE.
 WALLS. 10" STONE.
 ROOF TYPE. HIP RED TILE.
 PITCH. 4.
 HEATING. STOVES.

FLOOR. 3/4" x 3/4" Y. PINE.
 FINISH (INSIDE. 3/4" x 3/4" IN OFFICE. BATTS & 9" PANELS. WAITING RM.
 (OUTSIDE. PITCH FACE STONE.
 CEILING HEIGHT 12' 0".
 LIGHTING. GAS.
 SANITARY FACILITIES. OUTSIDE TOILETS.



FLOOR PLAN.

COMBINATION STATION.
 SPRINGHILL. KANS.

APRIL 3. 1917.