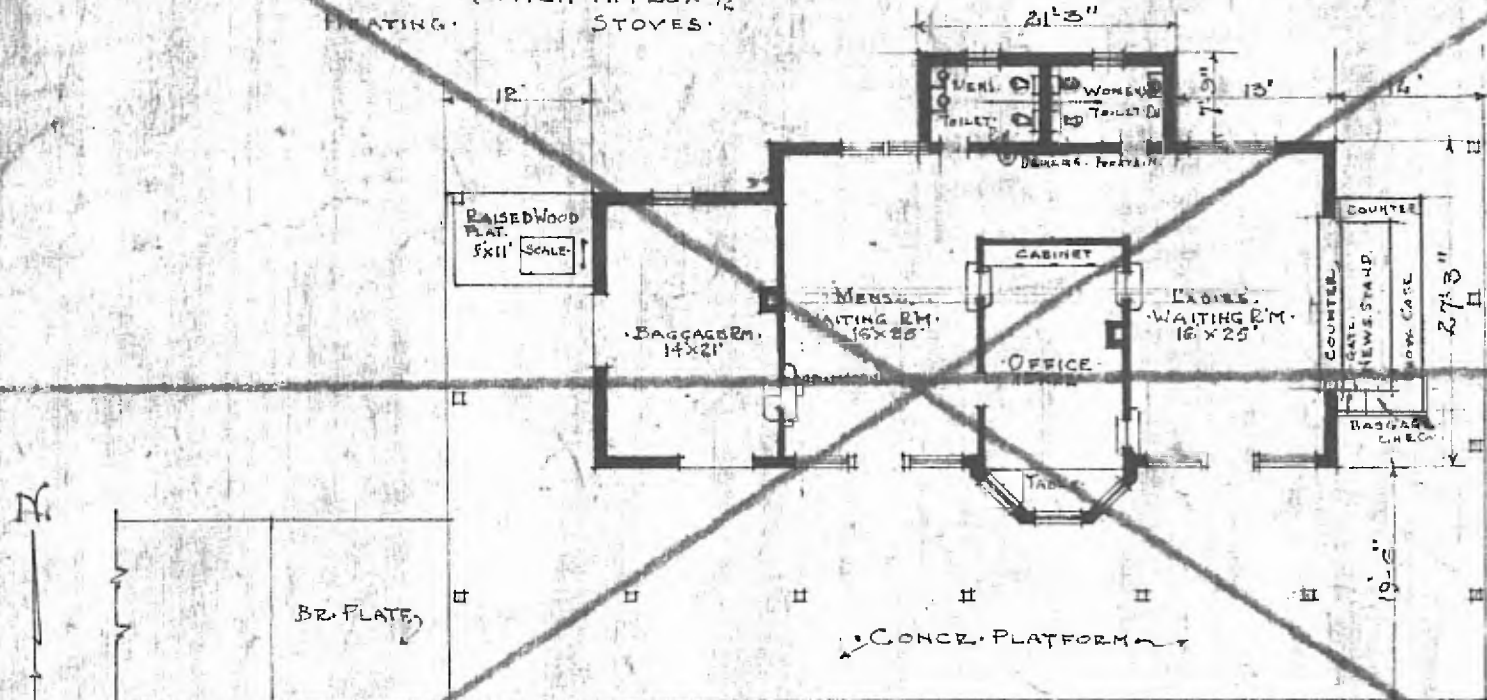


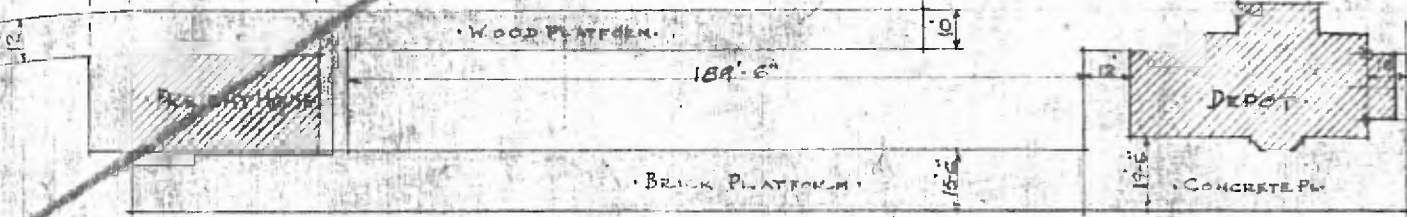
ERECTED: 1895
 TYPE: BRICK
 FOUNDATION:
 WALLS: 13" BRICK
 ROOF: TYPE: HIP SLATE
 PITCH: APPROX. 1/2
 HEATING: STOVES

FLOOR: 3/4" Y. PINE
 FINISH: { INTERIOR: SMOOTH PLASTER
 EXTERIOR: PRESS BRICK PAINTED
 CEILING HEIGHT: 12'-1"
 LIGHTING: ELECTRIC 2 WIRE 110 V.
 SANITARY FACILITIES: INSIDE TOILETS



VOID SEE
 NEW DRAWING

FLOOR PLAN



PASSENGER STATION
 PITTSBURG KANS.

PLOT PLAN FR. DEPOT
 SCALE 1"=50'

NOV. 7, 1910