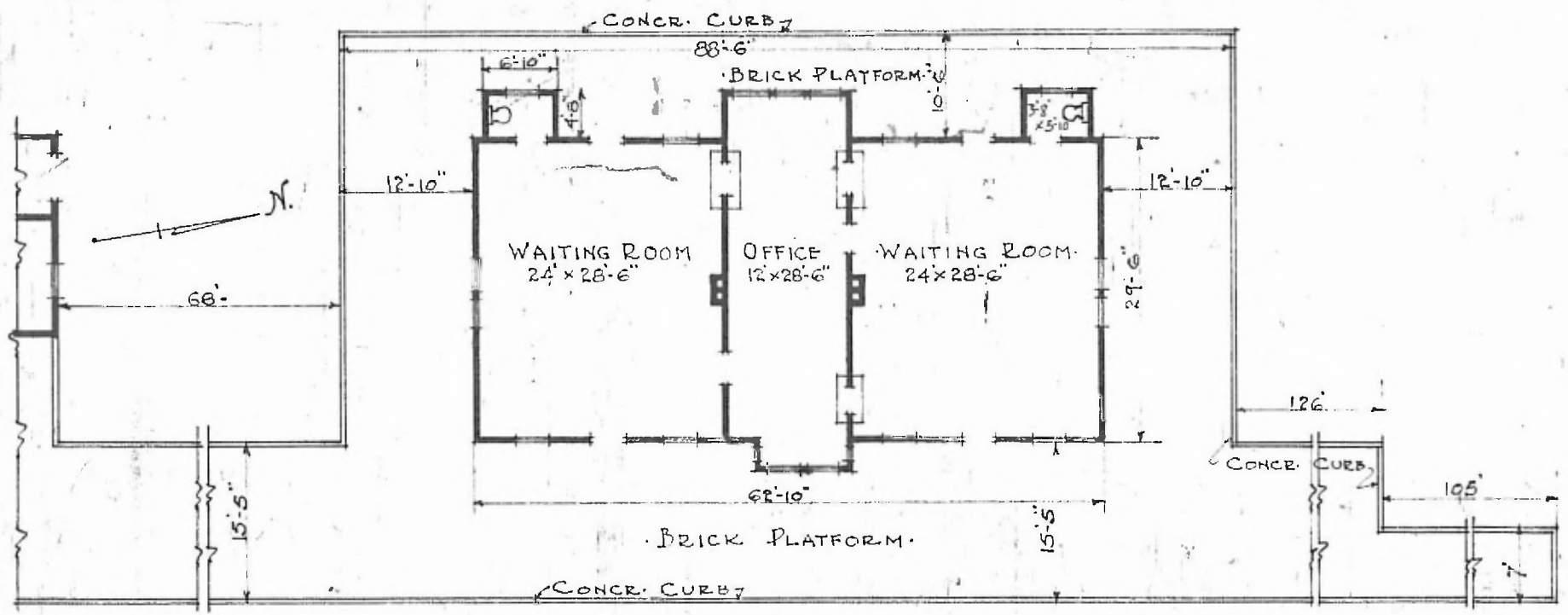


8

ERECTED. 1887.  
 TYPE. FRAME.  
 FOUNDATION. STONE.  
 WALLS. 2x6"  
 ROOF TYPE. HIP SHINGLE.  
 PITCH.  $\frac{1}{3}$ .  
 HEATING. STOVES.

DIV. NORTHERN  
 SUB. DIV. KANSAS CITY  
 FLOOR.  $\frac{7}{8}$ " x  $2\frac{1}{4}$ " MAPLE.  
 INSIDE. WAINSCOT PLASTER. STA. NO. C21  
 FINISH  
 OUTSIDE. 6" LAP SIDING.  
 CEILING HEIGHT 13'-0"  
 LIGHTING. ELECTRIC. 2 WIRE 110 A.C.  
 SANITARY FACILITIES. INSIDE TOILET SEWERS.

BAGGAGE & STOVE  
 HOUSE SEE OPP. PAGE.



FLOOR PLAN.  
 SCALE.  $\frac{1}{16}$ " = 1'-0"

PASSENGER STATION  
 OLATHE. KANS.

JUNE 19. 1915