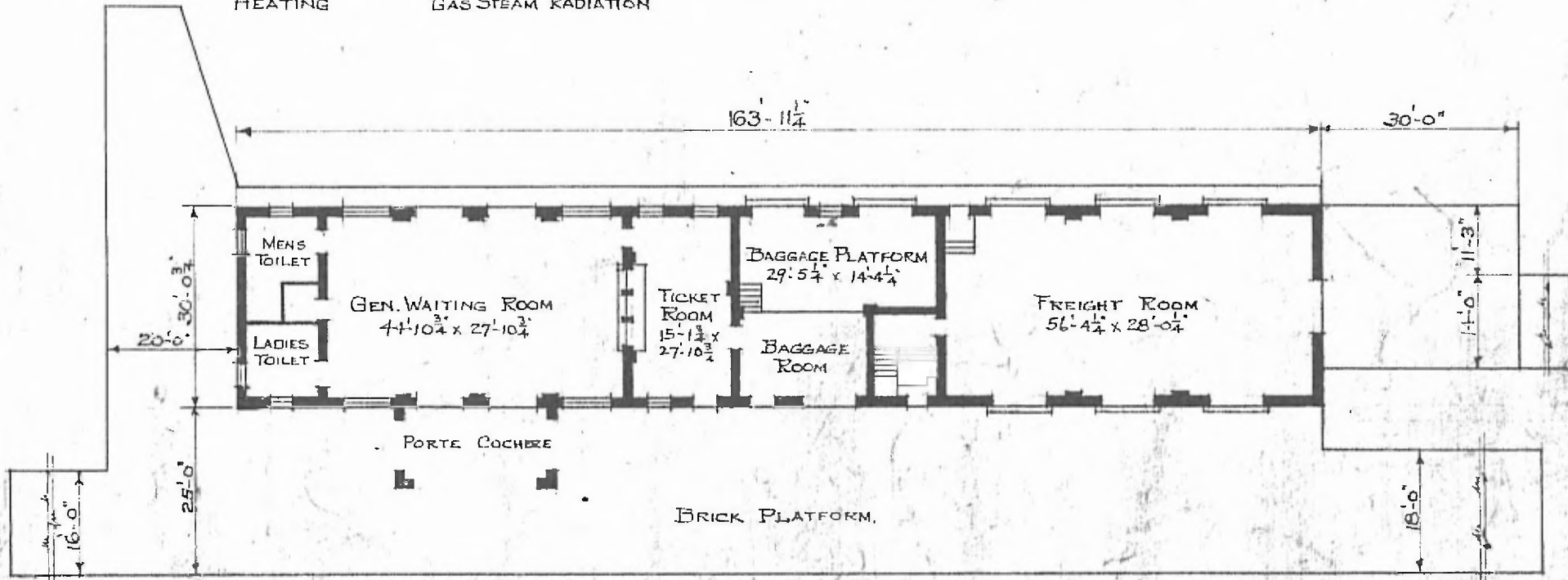


ERECTED 1925  
 TYPE BRICK  
 FOUNDATION CONCRETE  
 WALLS 13" BRICK  
 ROOF { TYPE FLAT & GABLE  
 PITCH 1/3  
 HEATING GAS STEAM RADIATION

FLOOR  
 FINISH { INSIDE  
 OUTSIDE  
 CEILING HEIGHT  
 LIGHTING  
 SANITARY FACILITIES

CEMENT & WOOD  
 BRICK & PLASTER  
 BRICK  
 12'-0"  
 ELECTRICITY  
 INSIDE TOILETS

NORTHERN DIV.  
 SUB. DIV. WICHITA  
 STA. NO. F 40; 85



FIRST FLOOR PLAN  
 SCALE 24' = 1"

PASSENGER STATION AT  
 NEODESHA, KAN.

REVISED 8-22-24.  
 MAY 15, 1915