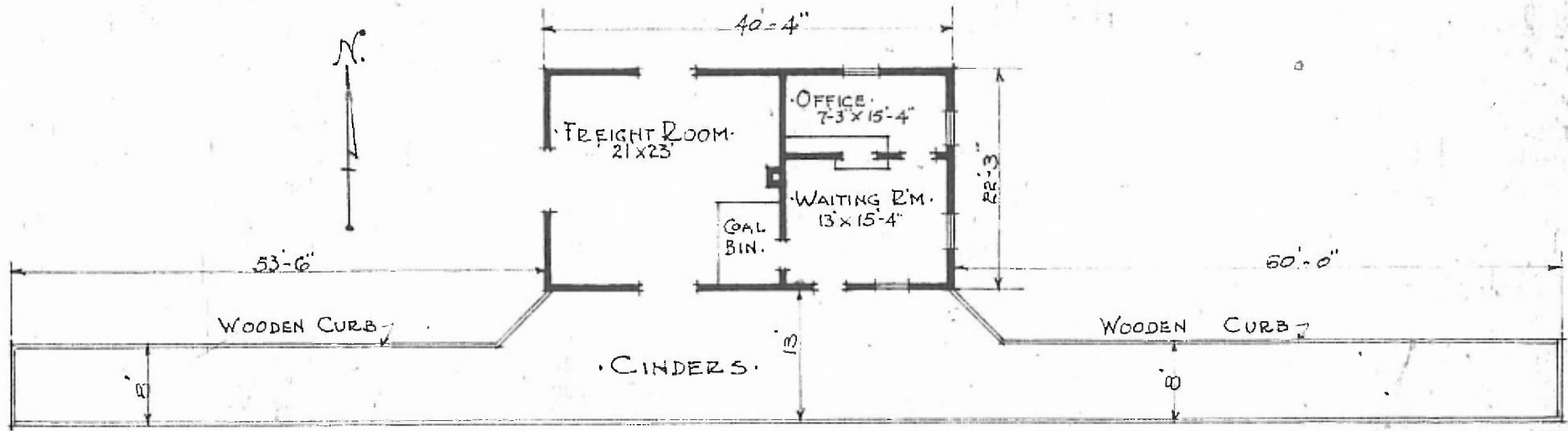


ERECTED 1883.
 TYPE FRAME:
 FOUNDATION PILE HEADS.
 WALLS 2" x 6" STUDS
 ROOF { TYPE GABLE SHINGLES.
 PITCH APPROX. 1/4.
 HEATING STOVES.

FLOOR FINISH { INSIDE: 7/8" x 3 1/4" M. & B.
 OUTSIDE: 1" x 12" BOARD & BATT.
 CEILING HEIGHT 11'-9".
 LIGHTING LAMPS.
 SANITARY FACILITIES OUTSIDE TOILETS.

DIV. YERTHERY
 SUB-DIV. PARSONS
 STA. No. M-152

41



FLOOR PLAN
 SCALE 1/16" = 1'-0"

COMBINATION STATION
 MONMOUTH KANS.

JULY 2 1915