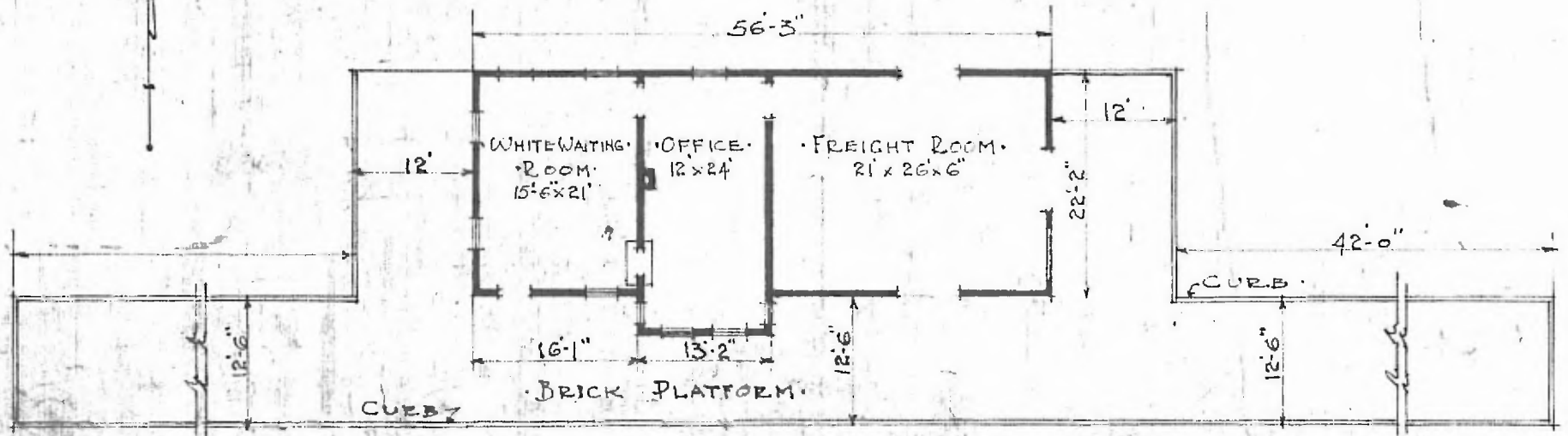


ERECTED: 1879  
 1880  
 TYPE: FRAME.  
 FOUNDATION: PILE HEADS.  
 WALLS: 2"x6" STUDS.  
 ROOF: { TYPE GABLE SHINGLES.  
 PITCH 1/4.  
 HEATING: STOVES.

FLOOR: 3/8"x3/4"  
 FINISH { INSIDE: 3/8"x3/4" M.F.B.  
 OUTSIDE: 1"x12" BOARD & BATTS.  
 CEILING HEIGHT: 11'-10"  
 LIGHTING: LAMPS.  
 SANITARY FACILITIES: OUTSIDE TOILETS.



FLOOR PLAN:  
 SCALE 1/16" = 1'-0"

JULY 1915

COMBINATION STATION  
 McCune, Kans.