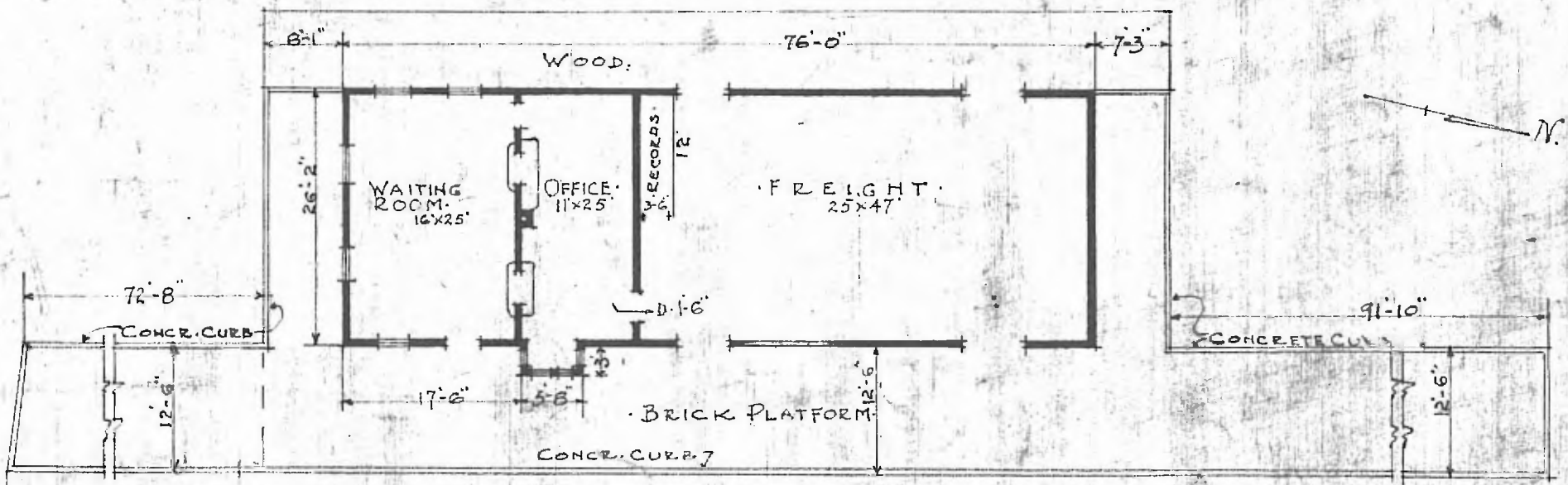


6

DIV. NORTHERN  
SUIR. DIV. KANSAS CITY  
STA. No. C-62

ERECTED: 1900.  
 TYPE: FRAME.  
 FOUNDATION: PILE HEADS.  
 WALLS: 2X6" STUDS.  
 ROOF: TYPE GABLE SHINGLES.  
 HEATING: STOVES.  
 PITCH: 1/4.

FLOOR: 3/8" x 3/4" Y. PINE.  
 FINISH: { INSIDE: 5/4" W. PINE M.E.B.  
 OUTSIDE: 1X12" BOARDS & BATTIS.  
 CEILING HEIGHT: 12-3". FT. 13-4".  
 LIGHTING: ELECTRIC. 2 WIRE. 110 A.C.  
 SANITARY FACILITIES: OUTSIDE TOILET.



FLOOR PLAN.  
 SCALE 1/8" = 1'-0"

JUNE 12 1915.

COMBINATION STATION AT  
 LACYGNE KANS.