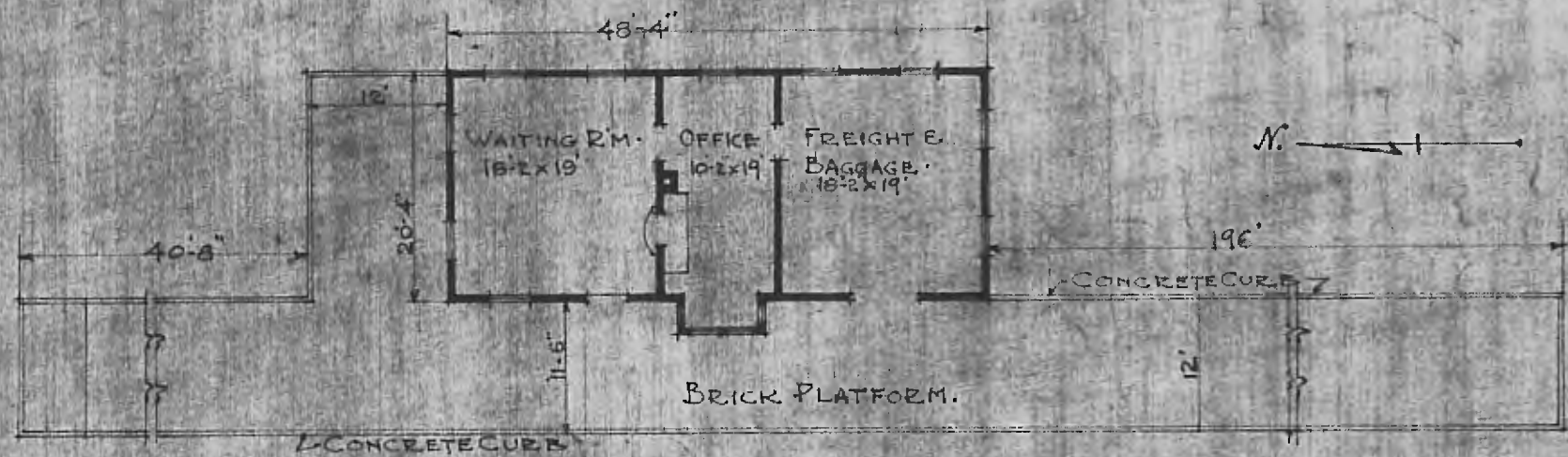


ERECTED. 1890.
TYPE. FRAME.
FOUNDATION.
WALLS. 2"x6"
TYPE FRAME GABLE
ROOF PITCH. 1/3
HEATING. STOVES.

FLOOR. 7/8" x 3/4"
INSIDE. 7/8" x 5/4" M.E.B.
FINISH
OUTSIDE. 1"x12" BOARD & BATT.
CEILING HEIGHT 12'-0".
LIGHTING. LAMPS.
SANITARY FACILITIES. OUTSIDE TOILET.



FLOOR PLAN.
SCALE 1/16" = 1'-0"

JUNE 16-1915

COMBINATION STATION
HILLSDALE, KANS.