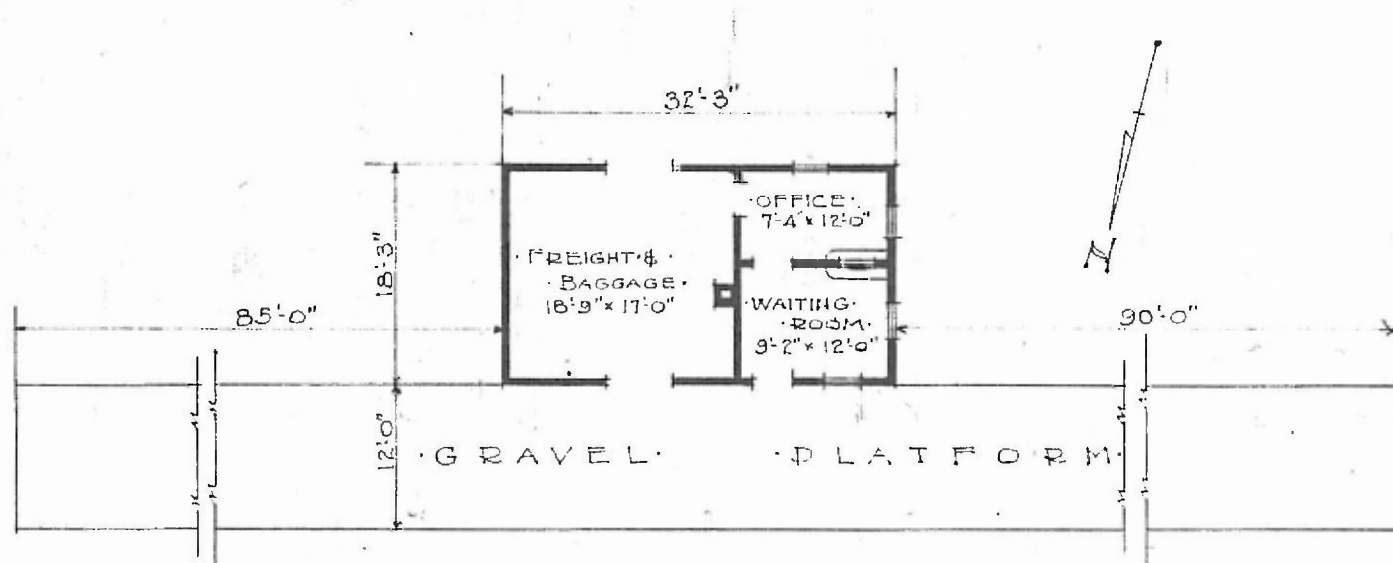


·ERECTED· 1880  
 ·TYPE· FRAME  
 ·FOUNDATION· PILE HEADS  
 ·WALLS· 2"×6"  
 ·ROOF· (TYPE· GABLE, SHINGLES  
 (PITCH· 1/3  
 ·HEATING· STOVES

·FLOOR· 3/4" × 3 1/2" Y.P.  
 ·FINISH· (INSIDE· 3/4" × 5 1/2" N.A.B.  
 (OUTSIDE· BOARDS & BATTENS STA. NO. F.478  
 ·CEILING HEIGHT· 11'-3"  
 ·LIGHTING· OIL LAMPS  
 ·SANITARY FACILITIES· OUTSIDE TOILET

DIV. NORTHERN  
 SUB-DIV. WICHITA

101



·FLOOR PLAN·  
 ·SCALE 1/16" = 1'-0"

MARCH 29, 1919.

·COMBINATION STATION·  
 ·HAVER HILL · KANS.