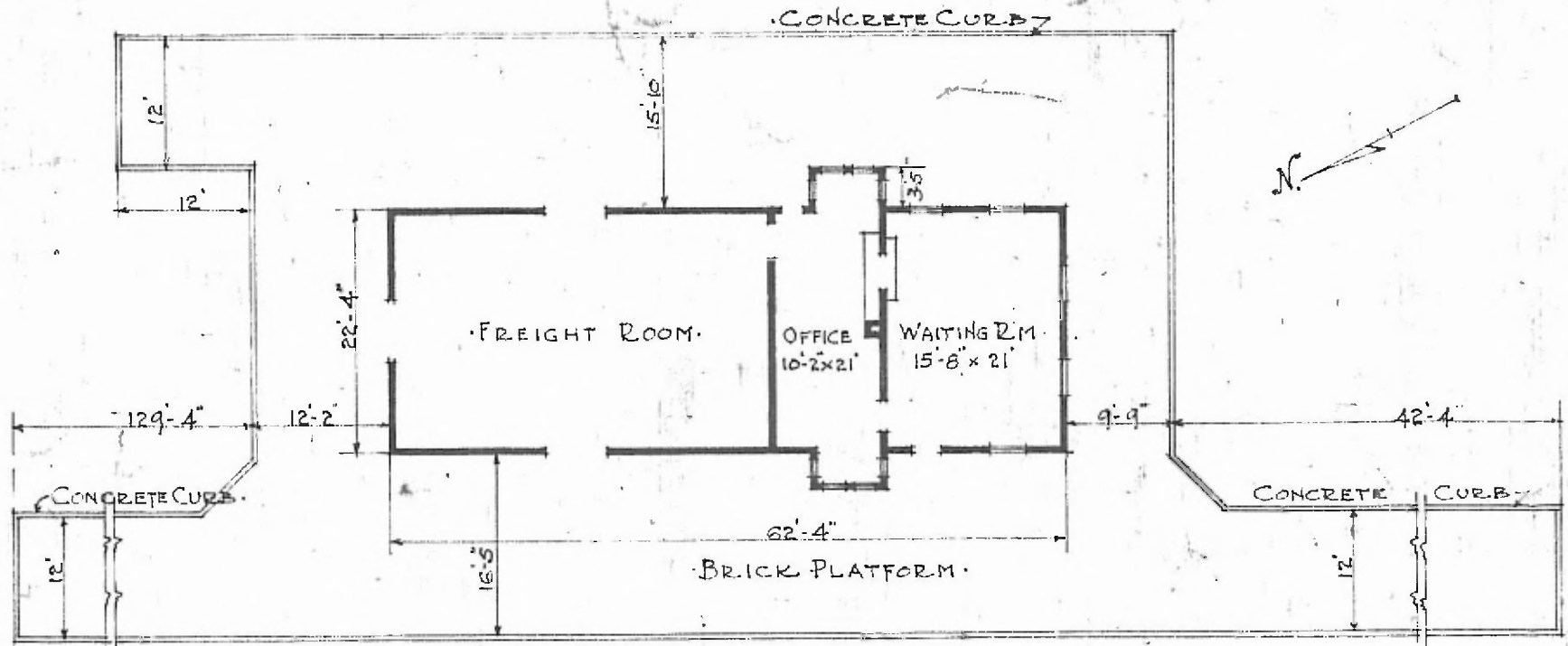


ERECTED. 1884.
 TYPE. FRAME.
 FOUNDATION. PILE HEADS.
 WALLS. 2" x 6"
 ROOF TYPE. SHINGLES.
 PITCH. 1/4.
 HEATING. STOVES.

FLOOR. 7/8" x 3 1/4"
 INSIDE. 7/8" x 3 1/4"
 FINISH }
 OUTSIDE. 1" x 12" BOARD & BATT.
 CEILING HEIGHT. 12-0" FRT. 10-8"
 LIGHTING. LAMPS.
 SANITARY FACILITIES. OUTSIDE TOILETS.

DIV. NORTHERN
 S.W. DIV. KANSAS CITY
 STA. NO. C = 86

7



FLOOR PLAN.
 SCALE 1/16" = 1'-0"

COMBINATION STATION AT
 FULTON, KANS.

JUNE 9 1915.