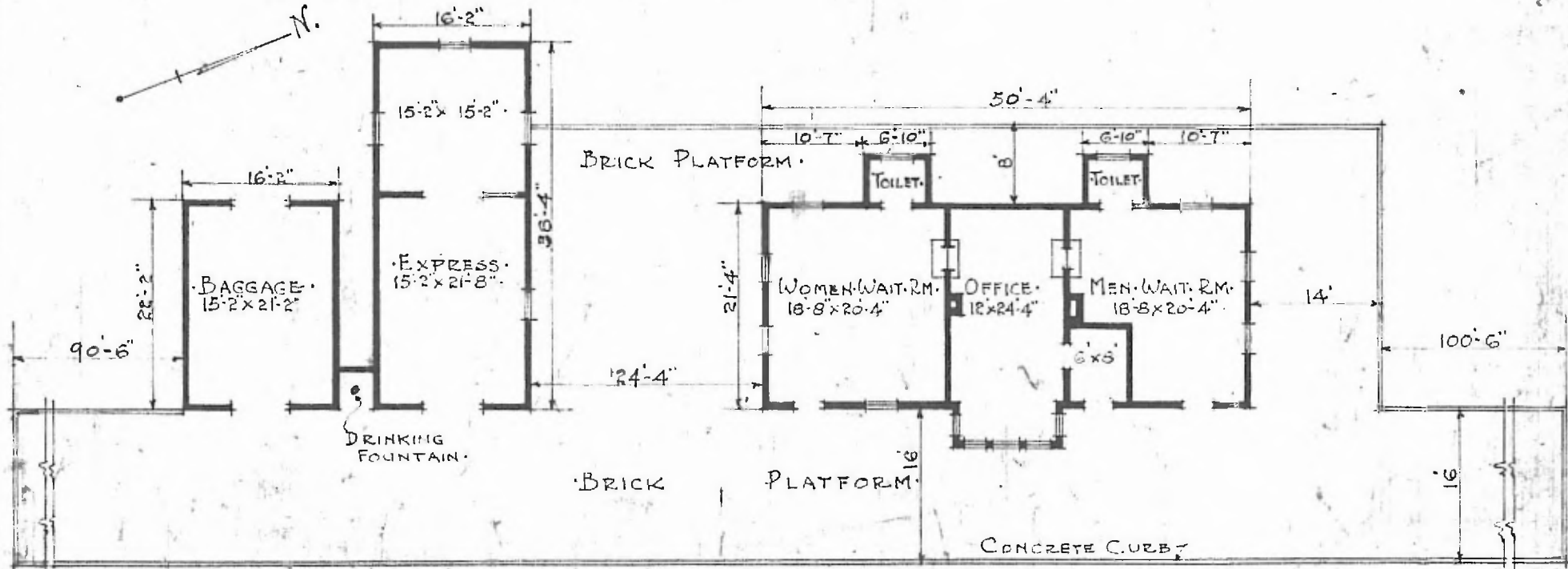


ERECTED: 1888.
 TYPE: FRAME.
 FOUNDATION: PILE HEAD.
 WALLS: 2x6" STUDS.
 ROOF: { TYPE: GABLE SHINGLES.
 PITCH: APPROX. 1/3.
 HEATING: STOVES.

FLOOR: 7/8" x 2 1/4" MAPLE.
 FINISH: { INSIDE: 1/8" x 5/4" M. E. B. W. PINE.
 OUTSIDE: 2" AP SIDING.
 CEILING HEIGHT: 14'-4".
 LIGHTING: GAS.
 SANITARY FACILITIES: INSIDE TOILETS.

47

DIV. NORTHERN
 SUB. DIV. AFTON
 SUB STA. No F-344



PASSENGER STATION.
 COLUMBUS, KANS.

JULY 12, 1915.