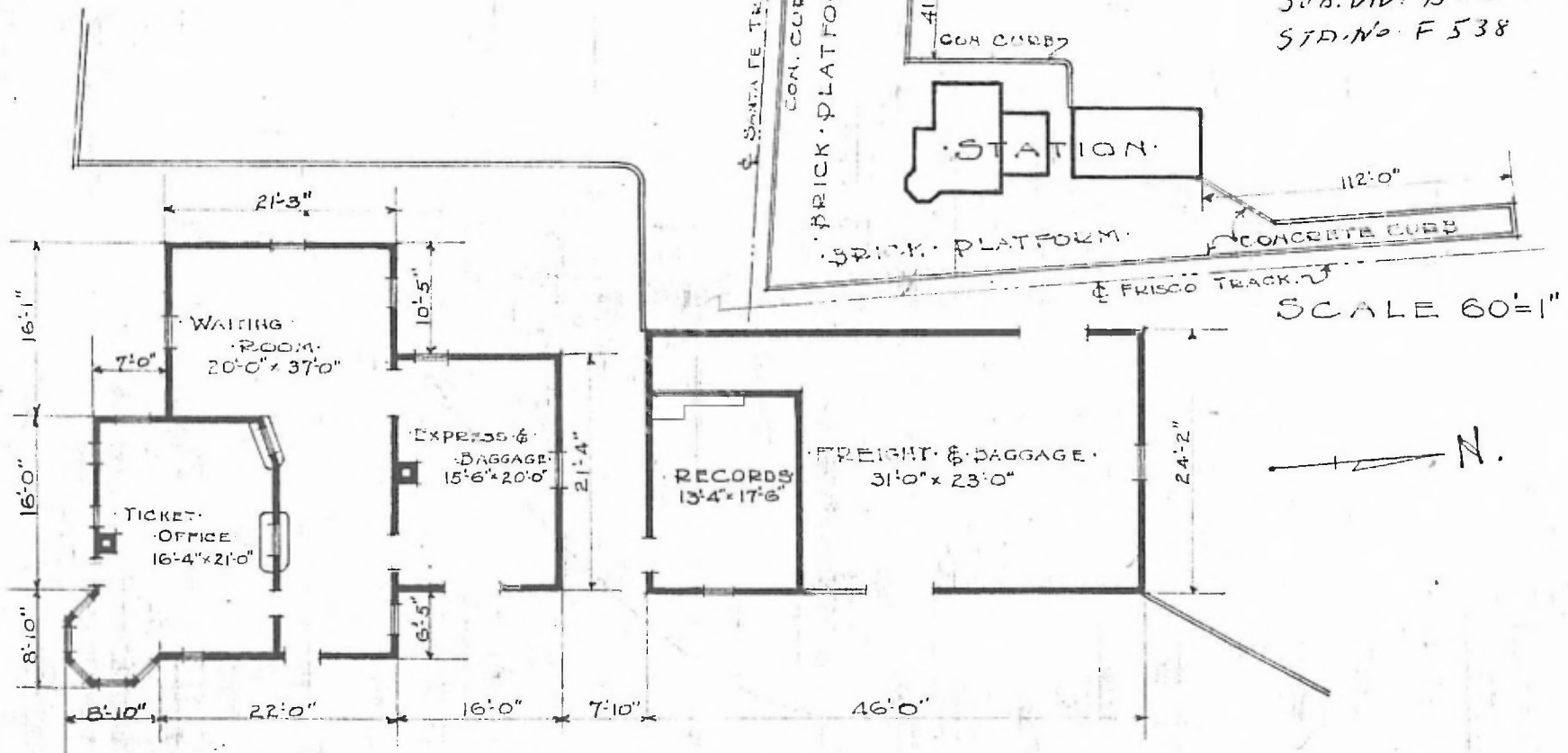


- ERECTED: 1887
- TYPE: FRAME
- FOUNDATION:
- WALLS: 2"x6"
- ROOF: { TYPE: Hip, SHINGLES.
PITCH: 1/3
- HEATING: STOVES

- FLOOR: 3/4" x 3 1/2" Y.F.
 - FINISH: { INSIDE: 3/4" x 3 1/2" M & B.
OUTSIDE: 1/2" x 6" LAP SIDING
 - CEILING HEIGHT: 12'-0"
 - LIGHTING: OIL LAMPS
 - SANITARY FACILITIES: OUTSIDE TOILETS
- DIV. NORTHERN
SUB. DIV. BURRTON
ST. NO. F 538



• FLOOR PLAN •
SCALE 1/16" = 1'-0"

• COMBINATION STATION •
• BURRTON • KANS. •

APRIL 29, 1917.